

# REGIONAL SCHOOL UNIT 13

## New England Common Assessment Program Study

### Fall 2011

#### Table of Contents:

Page 1	District NECAP summary for reading & mathematics for grades 3 – 8 indicating the percent of RSU 13 students proficient or proficient with distinction compared to the State average.
Pages 2 – 14	Grade level summaries and individual school results for reading & mathematics indicating the percent of RSU 13 students in each NECAP performance category compared to the State average.  These summaries also highlight gender performance for each grade in reading and mathematics.
Pages 3 – 4	Grade 3 reading & mathematics
Pages 5 – 6	Grade 4 reading & mathematics
Pages 7 – 8	Grade 5 reading & mathematics
Pages 9 –10	Grade 6 reading & mathematics
Pages 11–12	Grade 7 reading & mathematics
Pages 13–14	Grade 8 reading & mathematics

#### NECAP Achievement Level Descriptors

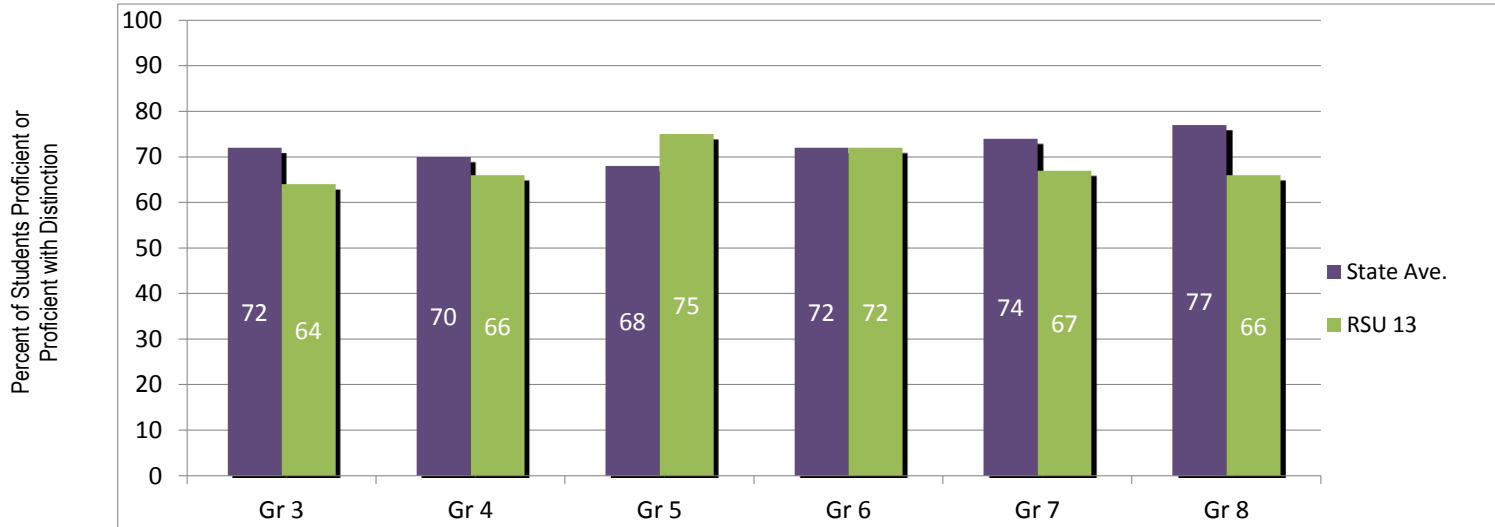
#4 =	Proficient With Distinction
# 3 =	Proficient
# 2 =	Partially Proficient
# 1 =	Substantially Below Proficient

#### Explanatory Notes:

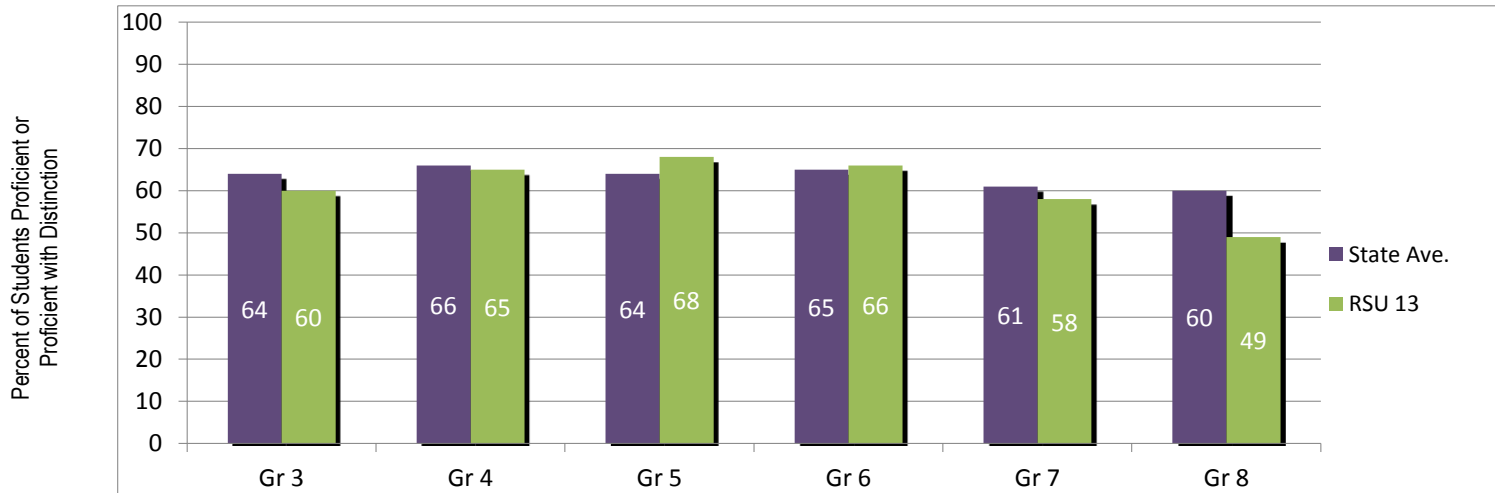
- *Slight variations may be noted between this summary document and Maine’s Comprehensive Assessment System Reporting. These variations occur due to corrected enrollment and participation data within RSU 13 reporting. We are informed by Maine’s Comprehensive Assessment System that these corrections will not be made in State level reporting unless they impact the calculation of Adequate Yearly Progress status outcomes.*

### RSU 13 District NECAP Summary – Fall 2011

#### Reading

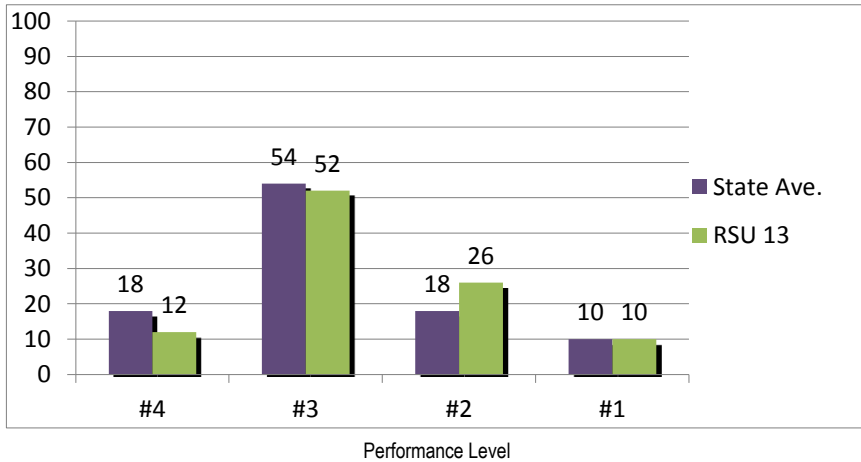


#### Mathematics

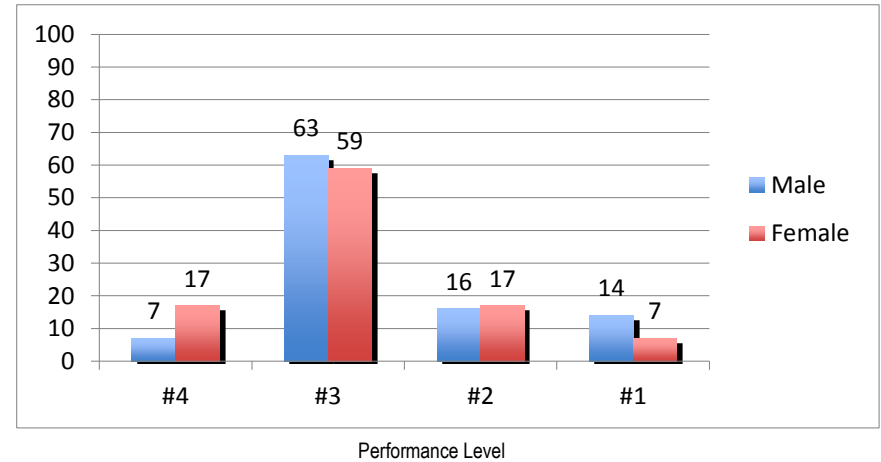


### Grade 3 Reading

Percent of Students



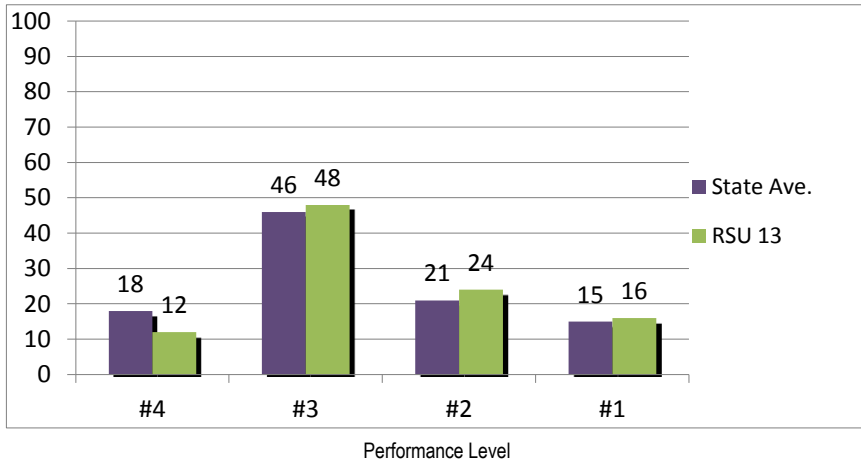
Percent of Students



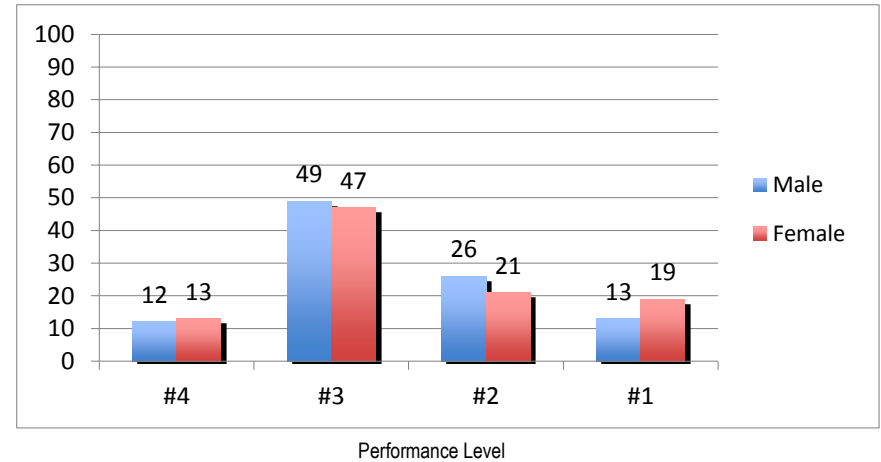
School	Gender	Total # of Students Tested Fall 2011	Number Proficient With Distinction (4)	Percent % Proficient With Distinction (4)	Number Proficient (3)	Percent % Proficient (3)	Number Partially Proficient (2)	Percent % Partially Proficient (2)	Number Below Proficient (1)	Percent % Below Proficient (1)
CCS	Male	10	2	20%	6	60%	2	20%	0	0%
CCS	Female	5	2	40%	3	60%	0	0%	0	0%
LL	Male	18	2	11%	10	56%	5	28%	1	6%
LL	Female	14	3	21%	5	36%	5	36%	1	7%
OHCS	Male	13	1	8%	10	77%	0	0%	2	15%
OHCS	Female	17	3	18%	12	71%	1	6%	1	6%
SS	Male	22	0	0%	13	59%	3	14%	6	27%
SS	Female	25	3	12%	15	60%	4	16%	3	12%
STG	Male	12	0	0%	8	67%	2	17%	2	17%
STG	Female	5	0	0%	4	80%	1	20%	0	0%
<b>Total</b>	<b>Male</b>	<b>75</b>	<b>5</b>	<b>7%</b>	<b>47</b>	<b>63%</b>	<b>12</b>	<b>16%</b>	<b>11</b>	<b>14%</b>
<b>Total</b>	<b>Female</b>	<b>66</b>	<b>11</b>	<b>17%</b>	<b>39</b>	<b>59%</b>	<b>11</b>	<b>17%</b>	<b>5</b>	<b>7%</b>
<b>Total Students</b>		<b>141</b>	<b>16</b>	<b>11%</b>	<b>86</b>	<b>61%</b>	<b>23</b>	<b>17%</b>	<b>16</b>	<b>11%</b>

### Grade 3 Mathematics

Percent of Students



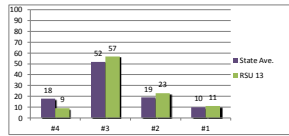
Percent of Students



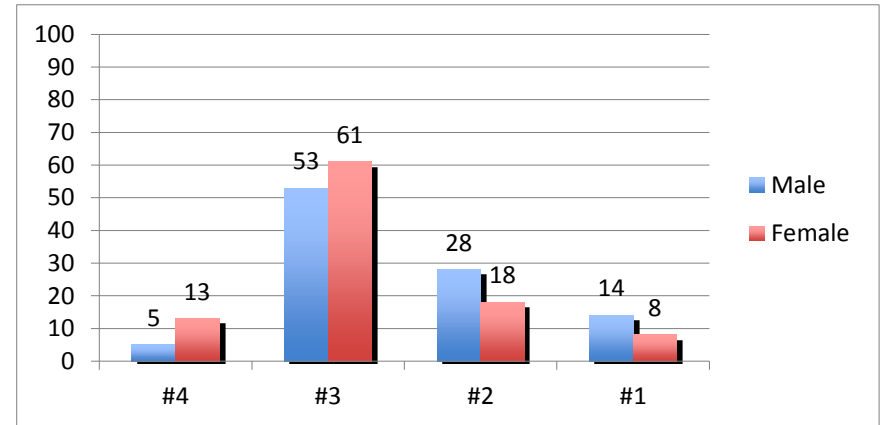
School	Gender	Total # of Students Tested Fall 2011	Number Proficient With Distinction (4)	Percent % Proficient With Distinction (4)	Number Proficient (3)	Percent % Proficient (3)	Number Partially Proficient (2)	Percent % Partially Proficient (2)	Number Below Proficient (1)	Percent % Below Proficient (1)
CC	Male	10	3	30%	4	40%	2	20%	1	10%
CC	Female	5	1	20%	4	80%	0	0%	0	0%
LL	Male	18	1	6%	9	50%	7	39%	1	6%
LL	Female	14	2	14%	7	50%	4	29%	1	7%
OHCS	Male	13	3	23%	7	54%	1	8%	2	15%
OHCS	Female	17	2	12%	10	59%	3	18%	2	12%
SS	Male	32	3	9%	15	47%	8	25%	6	19%
SS	Female	29	4	14%	9	31%	7	24%	9	31%
STG	Male	12	0	0%	7	58%	4	33%	1	8%
STG	Female	5	0	0%	3	60%	1	20%	1	20%
<b>Total</b>	<b>Male</b>	<b>85</b>	<b>10</b>	<b>12%</b>	<b>42</b>	<b>49%</b>	<b>22</b>	<b>26%</b>	<b>12</b>	<b>13%</b>
<b>Total</b>	<b>Female</b>	<b>70</b>	<b>9</b>	<b>13%</b>	<b>33</b>	<b>47%</b>	<b>15</b>	<b>21%</b>	<b>13</b>	<b>19%</b>
<b>Total Students</b>		<b>155</b>	<b>19</b>	<b>12%</b>	<b>75</b>	<b>48%</b>	<b>37</b>	<b>24%</b>	<b>25</b>	<b>16%</b>

### Grade 4 Reading

Percent of Students



Percent of Students



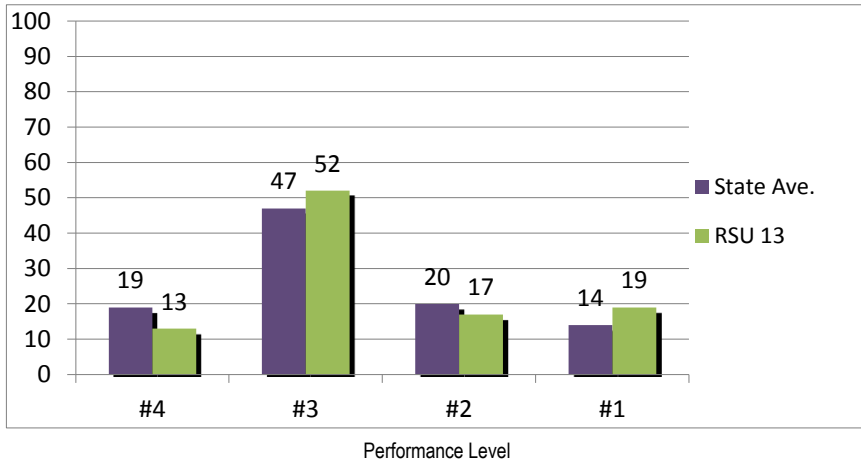
Performance Level

Performance Level

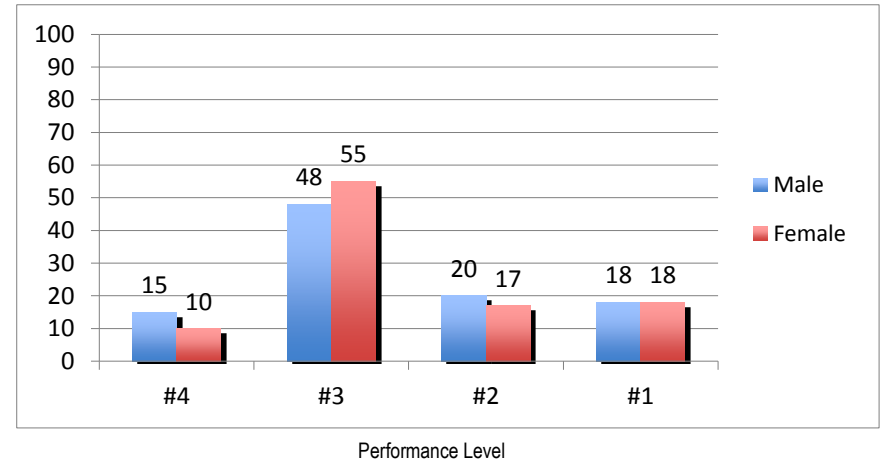
School	Gender	Total # of Students Tested Fall 2011	Number Proficient With Distinction (4)	Percent % Proficient With Distinction (4)	Number Proficient (3)	Percent % Proficient (3)	Number Partially Proficient (2)	Percent % Partially Proficient (2)	Number Below Proficient (1)	Percent % Below Proficient (1)
CCS	Male	7	1	14%	4	58%	1	14%	1	14%
CCS	Female	7	0	0%	5	71%	2	29%	0	0%
LLS	Male	12	0	0%	9	75%	3	25%	0	0%
LLS	Female	11	1	9%	8	73%	1	9%	1	9%
OHCS	Male	9	1	11%	6	67%	2	22%	0	0%
OHCS	Female	12	2	17%	10	83%	0	0%	0	0%
SS	Male	18	1	6%	6	33%	6	33%	5	28%
SS	Female	20	4	20%	8	40%	5	25%	3	15%
STG	Male	12	0	0%	6	50%	4	33%	2	17%
STG	Female	11	1	9%	6	55%	3	27%	1	9%
<b>Total</b>	<b>Male</b>	<b>58</b>	<b>3</b>	<b>5%</b>	<b>31</b>	<b>53%</b>	<b>16</b>	<b>28%</b>	<b>8</b>	<b>14%</b>
<b>Total</b>	<b>Female</b>	<b>61</b>	<b>8</b>	<b>13%</b>	<b>37</b>	<b>61%</b>	<b>11</b>	<b>18%</b>	<b>5</b>	<b>8%</b>
<b>Total Students</b>		<b>119</b>	<b>11</b>	<b>9%</b>	<b>68</b>	<b>57%</b>	<b>27</b>	<b>23%</b>	<b>13</b>	<b>11%</b>

### Grade 4 Mathematics

Percent of Students



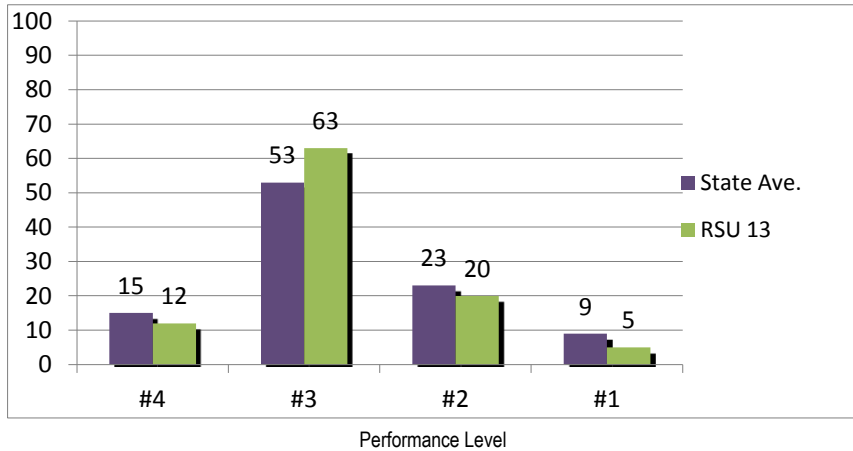
Percent of Students



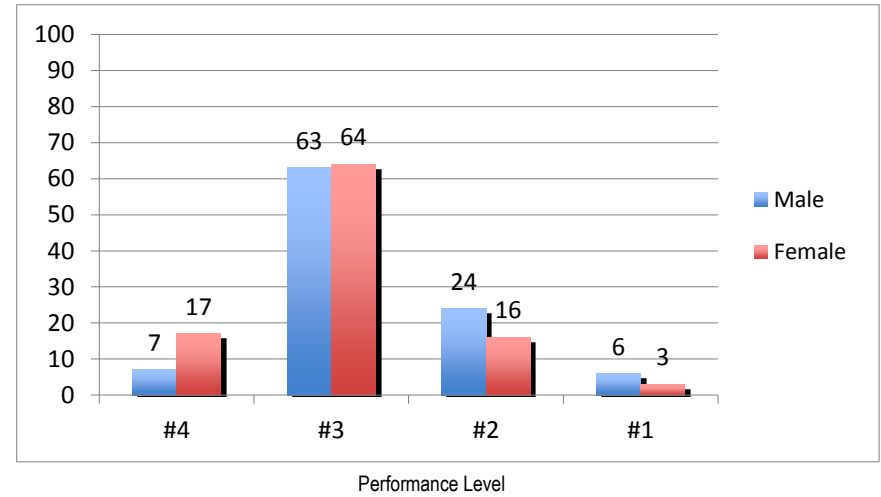
School	Gender	Total # of Students Tested Fall 2011	Number Proficient With Distinction (4)	Percent % Proficient With Distinction (4)	Number Proficient (3)	Percent % Proficient (3)	Number Partially Proficient (2)	Percent % Partially Proficient (2)	Number Below Proficient (1)	Percent % Below Proficient (1)
CCS	Male	7	2	29%	5	71%	0	0%	0	0%
CCS	Female	7	2	29%	3	42%	2	29%	0	0%
LLS	Male	12	1	8%	8	67%	2	17%	1	8%
LLS	Female	11	0	0%	7	64%	2	18%	2	18%
OHCS	Male	9	2	22%	6	67%	2	17%	1	8%
OHCS	Female	12	0	0%	12	100%	0	0%	0	0%
SS	Male	18	4	22%	6	33%	3	17%	5	28%
SS	Female	20	4	20%	7	35%	5	25%	4	20%
STG	Male	12	0	0%	3	25%	5	42%	4	33%
STG	Female	10	0	0%	4	40%	1	10%	5	50%
<b>Total</b>	<b>Male</b>	<b>58</b>	<b>9</b>	<b>15%</b>	<b>28</b>	<b>48%</b>	<b>12</b>	<b>20%</b>	<b>11</b>	<b>18%</b>
<b>Total</b>	<b>Female</b>	<b>60</b>	<b>6</b>	<b>10%</b>	<b>33</b>	<b>55%</b>	<b>10</b>	<b>17%</b>	<b>11</b>	<b>18%</b>
<b>Total Students</b>		<b>118</b>	<b>15</b>	<b>13%</b>	<b>61</b>	<b>52%</b>	<b>22</b>	<b>17%</b>	<b>22</b>	<b>19%</b>

### Grade 5 Reading

Percent of Students



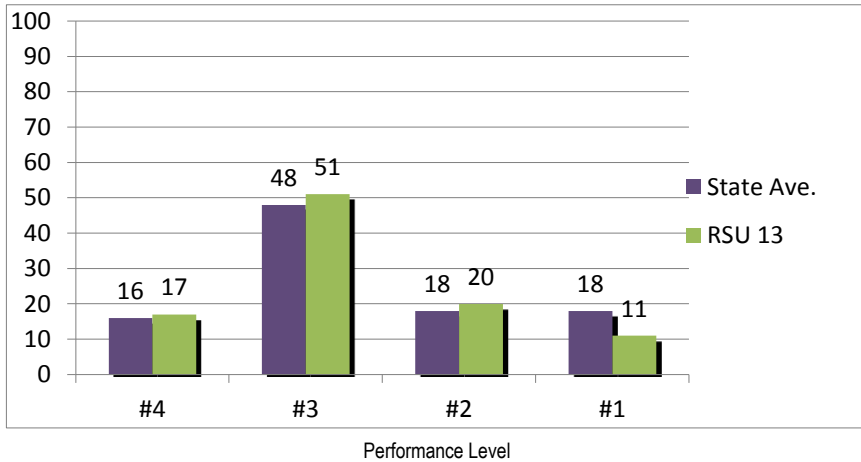
Percent of Students



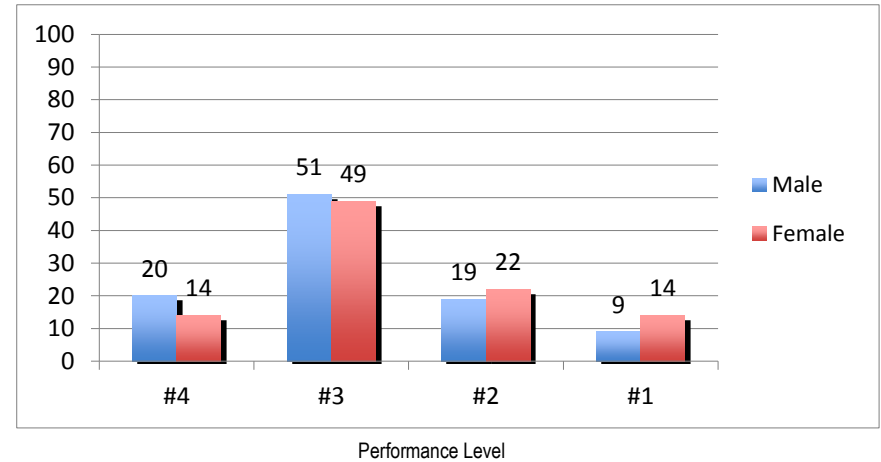
School	Gender	Total # of Students Tested Fall 2011	Number Proficient With Distinction (4)	Percent % Proficient With Distinction (4)	Number Proficient (3)	Percent % Proficient (3)	Number Partially Proficient (2)	Percent % Partially Proficient (2)	Number Below Proficient (1)	Percent % Below Proficient (1)
OHCS	Male	11	0	0%	9	82%	2	10%	0	0%
OHCS	Female	9	1	11%	8	89%	0	0%	0	0%
RDMS	Male	24	1	4%	13	54%	8	33%	2	8%
RDMS	Female	24	4	17%	16	67%	2	8%	2	8%
STG	Male	15	2	13%	9	60%	4	27%	0	0%
STG	Female	5	2	40%	2	40%	1	20%	0	0%
TGS	Male	19	2	11%	12	63%	3	16%	2	11%
TGS	Female	25	4	16%	14	56%	7	28%	0	0%
<b>Total</b>	<b>Male</b>	<b>68</b>	<b>5</b>	<b>7%</b>	<b>43</b>	<b>63%</b>	<b>16</b>	<b>24%</b>	<b>4</b>	<b>6%</b>
<b>Total</b>	<b>Female</b>	<b>64</b>	<b>11</b>	<b>17%</b>	<b>40</b>	<b>64%</b>	<b>10</b>	<b>16%</b>	<b>2</b>	<b>3%</b>
<b>Total Students</b>		<b>132</b>	<b>16</b>	<b>12%</b>	<b>83</b>	<b>63%</b>	<b>16</b>	<b>20%</b>	<b>6</b>	<b>5%</b>

### Grade 5 Mathematics

Percent of Students



Percent of Students

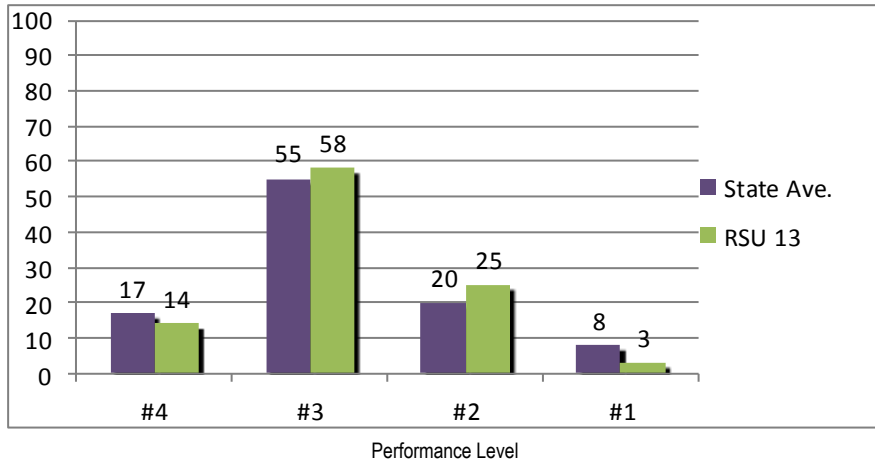


School	Gender	Total # of Students Tested Fall 2011	Number Proficient With Distinction (4)	Percent % Proficient With Distinction (4)	Number Proficient (3)	Percent % Proficient (3)	Number Partially Proficient (2)	Percent % Partially Proficient (2)	Number Below Proficient (1)	Percent % Below Proficient (1)
OHCS	Male	11	4	36%	5	45%	2	18%	0	0%
OHCS	Female	9	1	11%	6	67%	1	11%	1	11%
RDMS	Male	24	3	13%	15	63%	5	21%	1	4%
RDMS	Female	24	6	25%	9	38%	7	29%	2	8%
STG	Male	15	2	13%	8	53%	3	20%	2	13%
STG	Female	5	0	0%	2	40%	2	40%	1	20%
TGS	Male	19	5	26%	8	42%	3	16%	3	16%
TGS	Female	25	2	8%	14	56%	4	16%	5	20%
<b>Total</b>	<b>Male</b>	<b>69</b>	<b>14</b>	<b>20%</b>	<b>35</b>	<b>51%</b>	<b>13</b>	<b>19%</b>	<b>6</b>	<b>9%</b>
<b>Total</b>	<b>Female</b>	<b>63</b>	<b>9</b>	<b>14%</b>	<b>31</b>	<b>49%</b>	<b>14</b>	<b>22%</b>	<b>9</b>	<b>14%</b>
<b>Total Students</b>		<b>132</b>	<b>23</b>	<b>17%</b>	<b>66</b>	<b>51%</b>	<b>27</b>	<b>20%</b>	<b>15</b>	<b>11%</b>

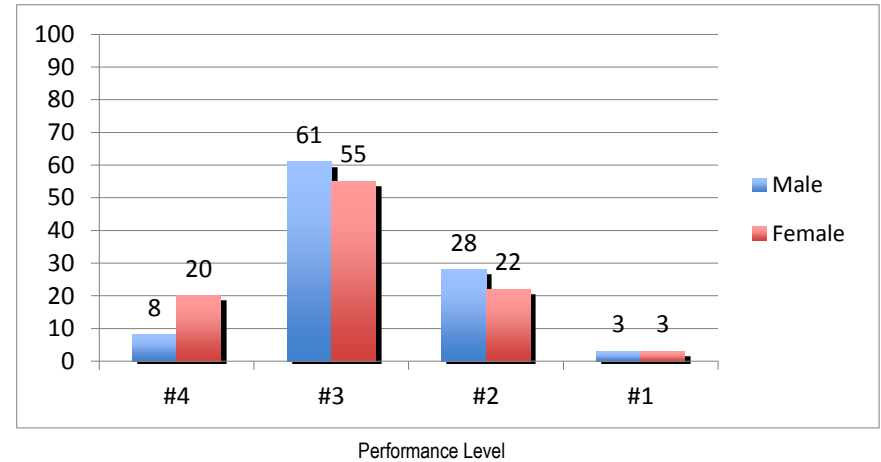


### Grade 6 Reading

Percent of Students



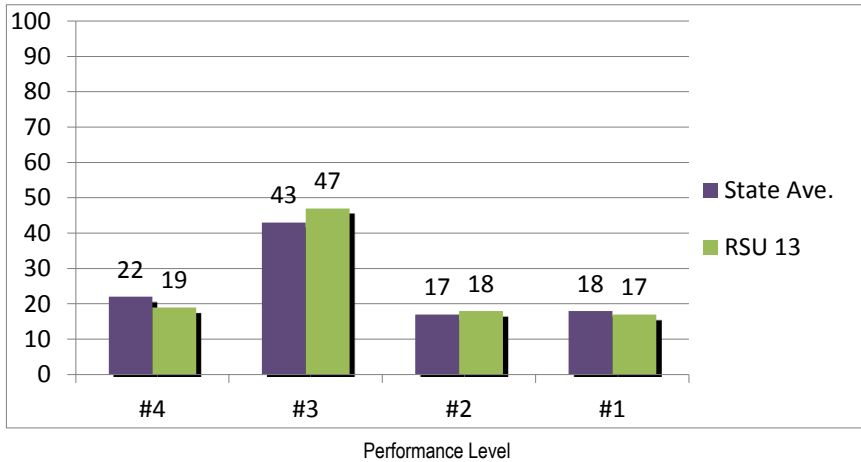
Percent of Students



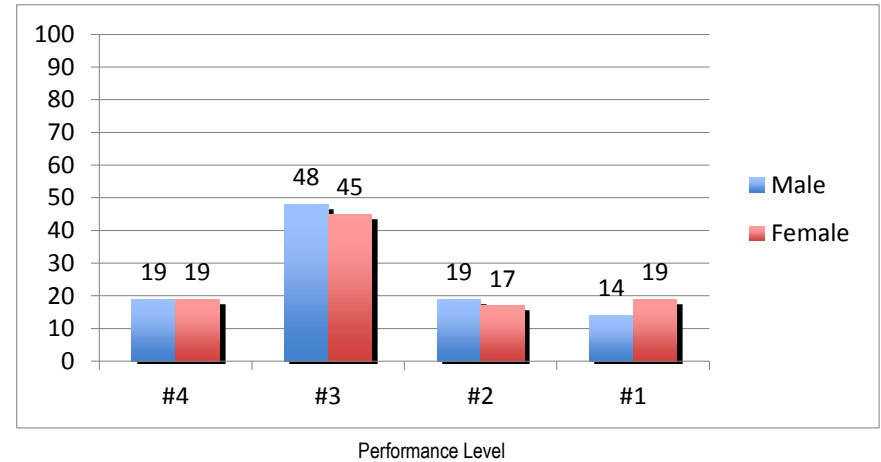
School	Gender	Total # of Students Tested Fall 2011	Number Proficient With Distinction (4)	Percent % Proficient With Distinction (4)	Number Proficient (3)	Percent % Proficient (3)	Number Partially Proficient (2)	Percent % Partially Proficient (2)	Number Below Proficient (1)	Percent % Below Proficient (1)
RDMS	Male	37	1	3%	23	62%	13	35%	0	0%
RDMS	Female	32	3	9%	18	56%	10	31%	1	3%
STG	Male	12	3	25%	6	50%	2	17%	1	8%
STG	Female	16	5	31%	10	63%	1	6%	0	0%
TGS	Male	15	1	7%	10	67%	3	20%	1	7%
TGS	Female	21	6	29%	10	48%	4	19%	1	5%
<b>Total</b>	<b>Male</b>	<b>64</b>	<b>5</b>	<b>8%</b>	<b>39</b>	<b>61%</b>	<b>18</b>	<b>28%</b>	<b>2</b>	<b>3%</b>
<b>Total</b>	<b>Female</b>	<b>69</b>	<b>14</b>	<b>20%</b>	<b>38</b>	<b>55%</b>	<b>15</b>	<b>22%</b>	<b>2</b>	<b>3%</b>
<b>Total Students</b>		<b>133</b>	<b>19</b>	<b>14%</b>	<b>77</b>	<b>58%</b>	<b>33</b>	<b>25%</b>	<b>4</b>	<b>3%</b>

### Grade 6 Mathematics

Percent of Students



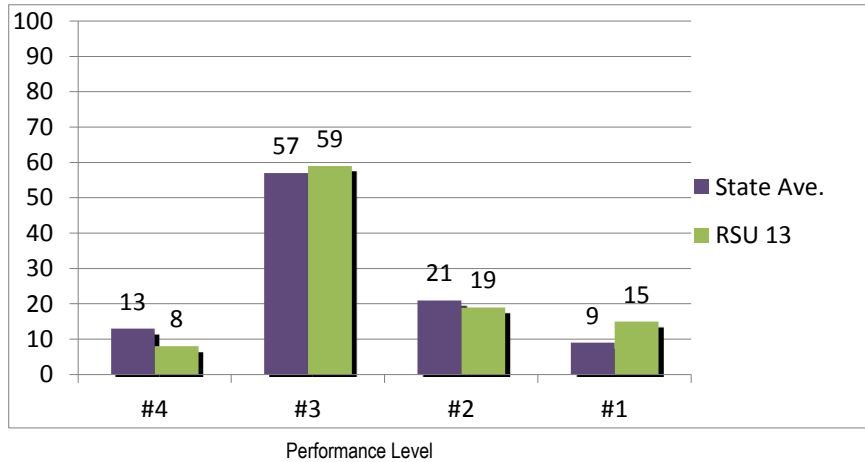
Percent of Students



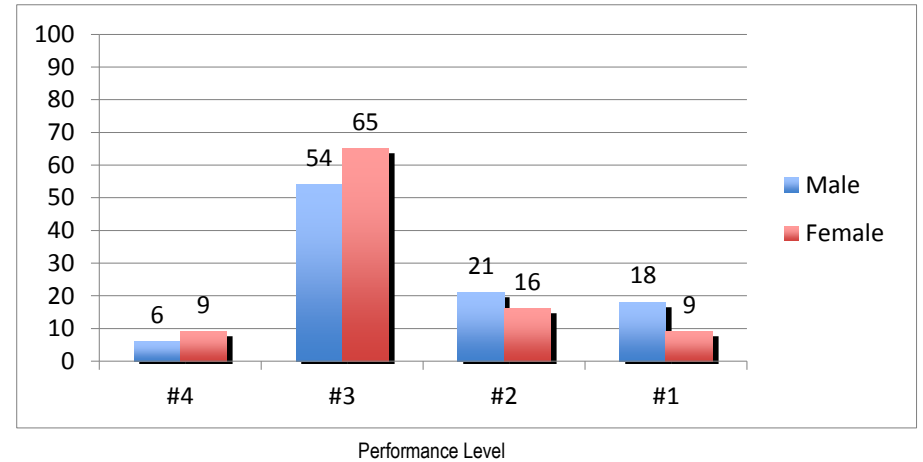
School	Gender	Total # of Students Tested Fall 2011	Number Proficient With Distinction (4)	Percent % Proficient With Distinction (4)	Number Proficient (3)	Percent % Proficient (3)	Number Partially Proficient (2)	Percent % Partially Proficient (2)	Number Below Proficient (1)	Percent % Below Proficient (1)
RDMS	Male	37	9	24%	20	54%	6	16%	2	5%
RDMS	Female	32	8	25%	16	50%	3	9%	5	16%
STG	Male	12	2	17%	5	42%	3	25%	2	17%
STG	Female	16	3	19%	7	44%	3	19%	3	19%
TGS	Male	15	1	7%	6	40%	3	20%	5	33%
TGS	Female	21	2	10%	8	38%	6	29%	5	24%
<b>Total</b>	<b>Male</b>	<b>64</b>	<b>12</b>	<b>19%</b>	<b>31</b>	<b>48%</b>	<b>12</b>	<b>19%</b>	<b>9</b>	<b>14%</b>
<b>Total</b>	<b>Female</b>	<b>69</b>	<b>13</b>	<b>19%</b>	<b>31</b>	<b>45%</b>	<b>12</b>	<b>17%</b>	<b>13</b>	<b>19%</b>
<b>Total Students</b>		<b>133</b>	<b>25</b>	<b>19%</b>	<b>62</b>	<b>47%</b>	<b>24</b>	<b>18%</b>	<b>22</b>	<b>17%</b>

### Grade 7 Reading

Percent of Students



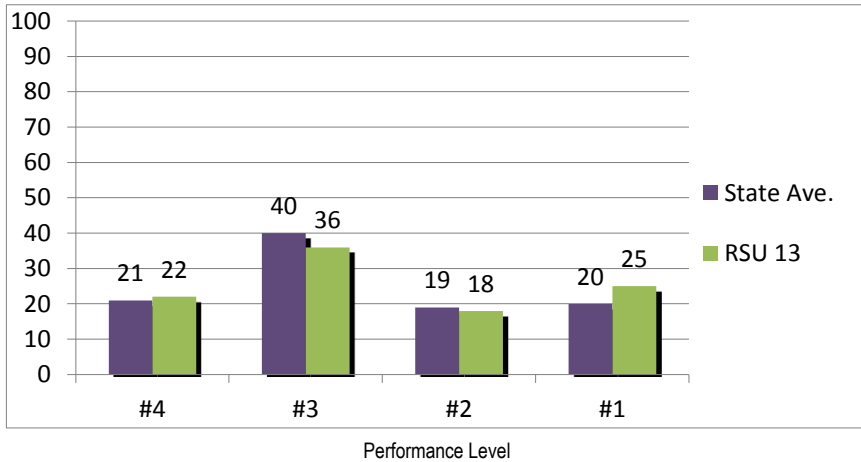
Percent of Students



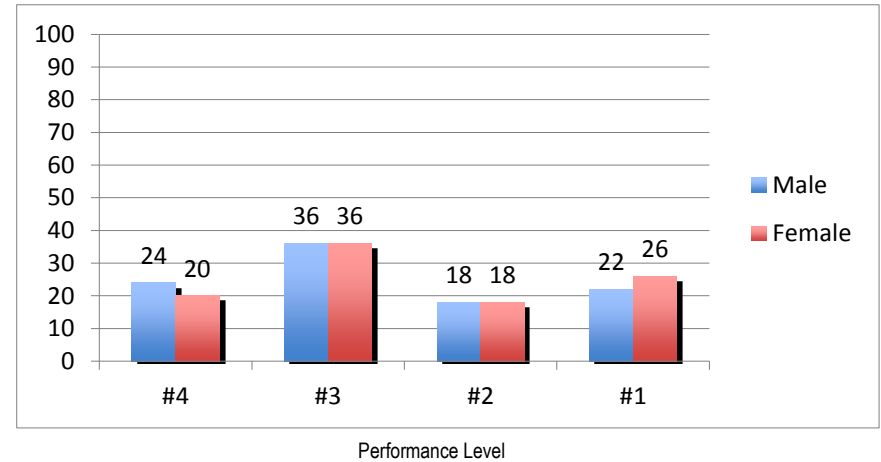
School	Gender	Total # of Students Tested Fall 2011	Number Proficient With Distinction (4)	Percent % Proficient With Distinction (4)	Number Proficient (3)	Percent % Proficient (3)	Number Partially Proficient (2)	Percent % Partially Proficient (2)	Number Below Proficient (1)	Percent % Below Proficient (1)
RDMS	Male	44	1	2%	25	57%	9	20%	9	20%
RDMS	Female	44	4	9%	28	64%	6	14%	6	14%
STG	Male	8	3	37%	4	50%	1	13%	0	0%
STG	Female	10	1	10%	5	50%	3	30%	1	10%
TGS	Male	24	1	4%	12	50%	6	25%	5	21%
TGS	Female	20	2	10%	15	75%	3	15%	0	0%
<b>Total</b>	<b>Male</b>	<b>76</b>	<b>5</b>	<b>6%</b>	<b>41</b>	<b>54%</b>	<b>16</b>	<b>21%</b>	<b>14</b>	<b>18%</b>
<b>Total</b>	<b>Female</b>	<b>74</b>	<b>7</b>	<b>9%</b>	<b>48</b>	<b>65%</b>	<b>12</b>	<b>16%</b>	<b>7</b>	<b>9%</b>
<b>Total Students</b>		<b>150</b>	<b>12</b>	<b>8%</b>	<b>89</b>	<b>59%</b>	<b>28</b>	<b>19%</b>	<b>21</b>	<b>15%</b>

### Grade 7 Mathematics

Percent of Students



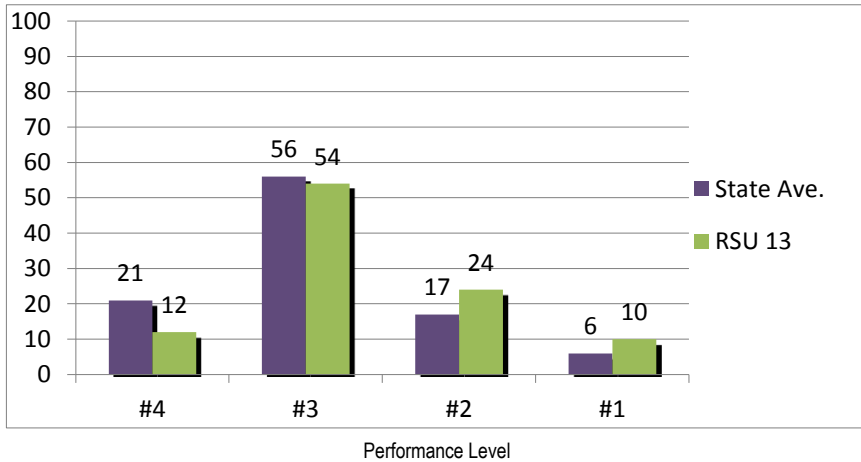
Percent of Students



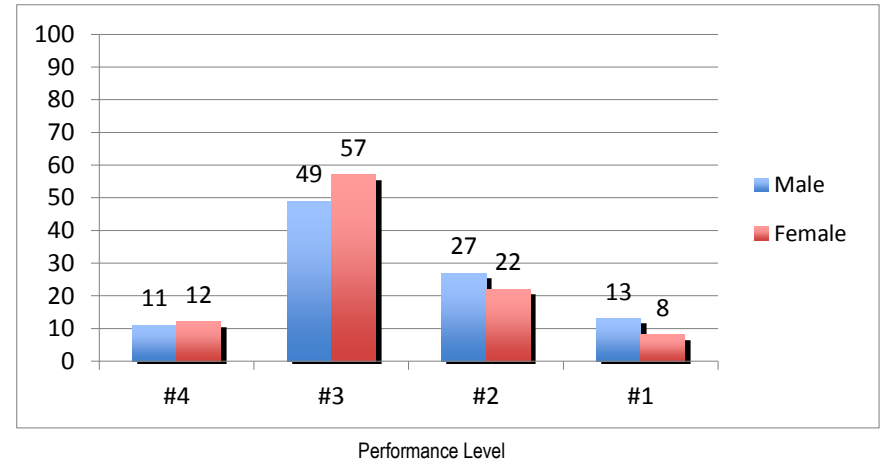
School	Gender	Total # of Students Tested Fall 2011	Number Proficient With Distinction (4)	Percent % Proficient With Distinction (4)	Number Proficient (3)	Percent % Proficient (3)	Number Partially Proficient (2)	Percent % Partially Proficient (2)	Number Below Proficient (1)	Percent % Below Proficient (1)
RDMS	Male	44	12	27%	13	30%	9	20%	10	23%
RDMS	Female	44	12	27%	15	34%	5	11%	12	27%
STG	Male	8	4	50%	3	37%	1	13%	0	0%
STG	Female	10	2	20%	4	40%	1	10%	3	30%
TGS	Male	24	2	8%	11	46%	4	17%	7	29%
TGS	Female	20	1	5%	8	40%	7	35%	4	20%
<b>Total</b>	<b>Male</b>	76	18	24%	27	36%	14	18%	17	22%
<b>Total</b>	<b>Female</b>	74	15	20%	27	36%	13	18%	19	26%
<b>Total Students</b>		150	33	22%	54	36%	27	18%	36	25%

### Grade 8 Reading

Percent of Students



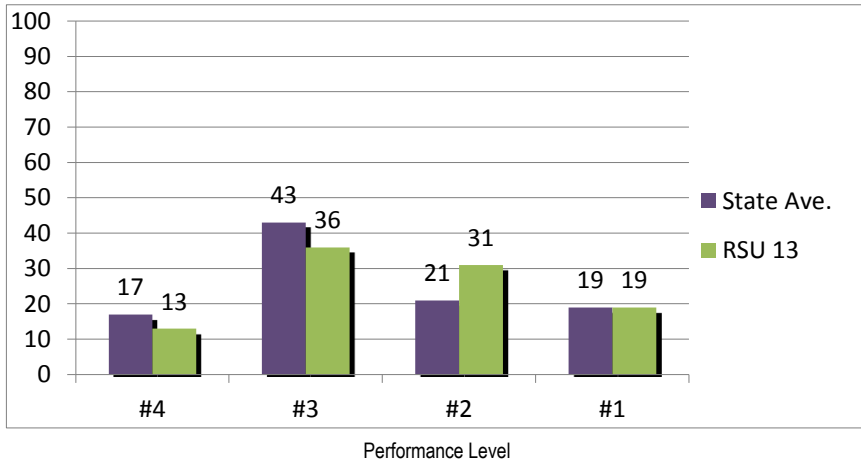
Percent of Students



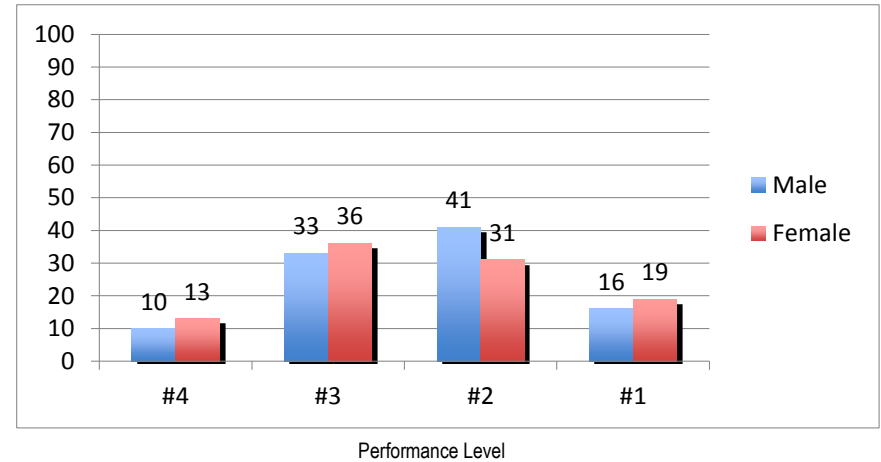
School	Gender	Total # of Students Tested Fall 2011	Number Proficient With Distinction (4)	Percent % Proficient With Distinction (4)	Number Proficient (3)	Percent % Proficient (3)	Number Partially Proficient (2)	Percent % Partially Proficient (2)	Number Below Proficient (1)	Percent % Below Proficient (1)
STG	Male	7	4	57%	2	29%	1	14%	0	0%
STG	Female	9	4	44%	4	44%	0	0%	1	11%
OHS-W	Male	56	3	5%	29	52%	16	29%	8	14%
OHS-W	Female	80	7	9%	47	59%	20	25%	6	8%
<b>Total</b>	<b>Male</b>	<b>63</b>	<b>7</b>	<b>11%</b>	<b>31</b>	<b>49%</b>	<b>17</b>	<b>27%</b>	<b>8</b>	<b>13%</b>
<b>Total</b>	<b>Female</b>	<b>89</b>	<b>11</b>	<b>12%</b>	<b>51</b>	<b>57%</b>	<b>20</b>	<b>22%</b>	<b>7</b>	<b>8%</b>
<b>Total Students</b>		<b>152</b>	<b>18</b>	<b>12%</b>	<b>82</b>	<b>54%</b>	<b>37</b>	<b>24%</b>	<b>15</b>	<b>10%</b>

### Grade 8 Mathematics

Percent of Students



Percent of Students



School	Gender	Total # of Students Tested Fall 2011	Number Proficient With Distinction (4)	Percent % Proficient With Distinction (4)	Number Proficient (3)	Percent % Proficient (3)	Number Partially Proficient (2)	Percent % Partially Proficient (2)	Number Below Proficient (1)	Percent % Below Proficient (1)
STG	Male	7	1	14%	1	14%	5	72%	0	0%
STG	Female	9	1	11%	3	33%	2	22%	3	33%
OHS-W	Male	56	5	9%	20	36%	21	38%	10	18%
OHS-W	Female	78	13	17%	30	38%	19	24%	16	21%
<b>Total</b>	<b>Male</b>	<b>63</b>	<b>6</b>	<b>10%</b>	<b>21</b>	<b>33%</b>	<b>26</b>	<b>41%</b>	<b>10</b>	<b>16%</b>
<b>Total</b>	<b>Female</b>	<b>87</b>	<b>14</b>	<b>16%</b>	<b>33</b>	<b>38%</b>	<b>21</b>	<b>24%</b>	<b>19</b>	<b>22%</b>
<b>Total Students</b>		<b>150</b>	<b>20</b>	<b>13%</b>	<b>54</b>	<b>36%</b>	<b>47</b>	<b>31%</b>	<b>29</b>	<b>19%</b>