

REGIONAL SCHOOL UNIT 13

New England Common Assessment Program Study

Fall 2010

Table of Contents:

Page 1	District NECAP summary for reading & mathematics for grades 3 – 8 indicating the percent of RSU 13 students proficient or proficient with distinction compared to the State average.
Pages 2 – 14	Grade level summaries and individual school results for reading & mathematics indicating the percent of RSU 13 students in each NECAP performance category compared to the State average. These summaries also highlight gender performance for each grade in reading and mathematics.
Pages 3 – 4	Grade 3 reading & mathematics
Pages 5 – 6	Grade 4 reading & mathematics
Pages 7 – 8	Grade 5 reading & mathematics
Pages 9 –10	Grade 6 reading & mathematics
Pages 11–12	Grade 7 reading & mathematics
Pages 13–14	Grade 8 reading & mathematics

NECAP Achievement Level Descriptors

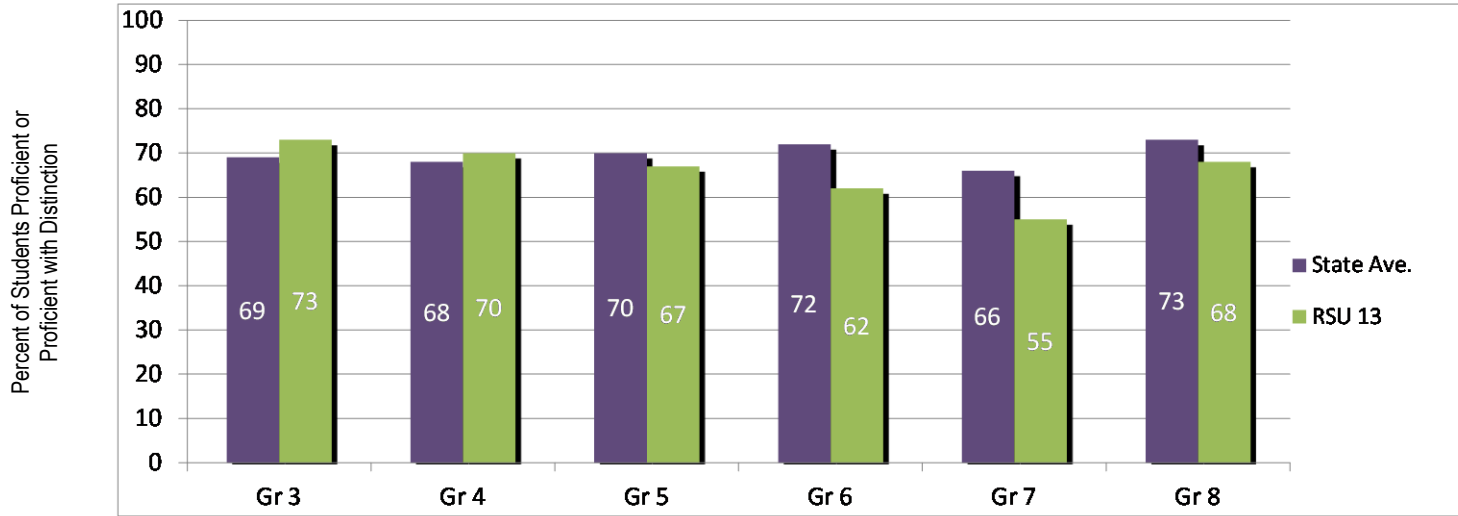
#4 =	Proficient With Distinction
# 3 =	Proficient
# 2 =	Partially Proficient
# 1 =	Substantially Below Proficient

Explanatory Notes:

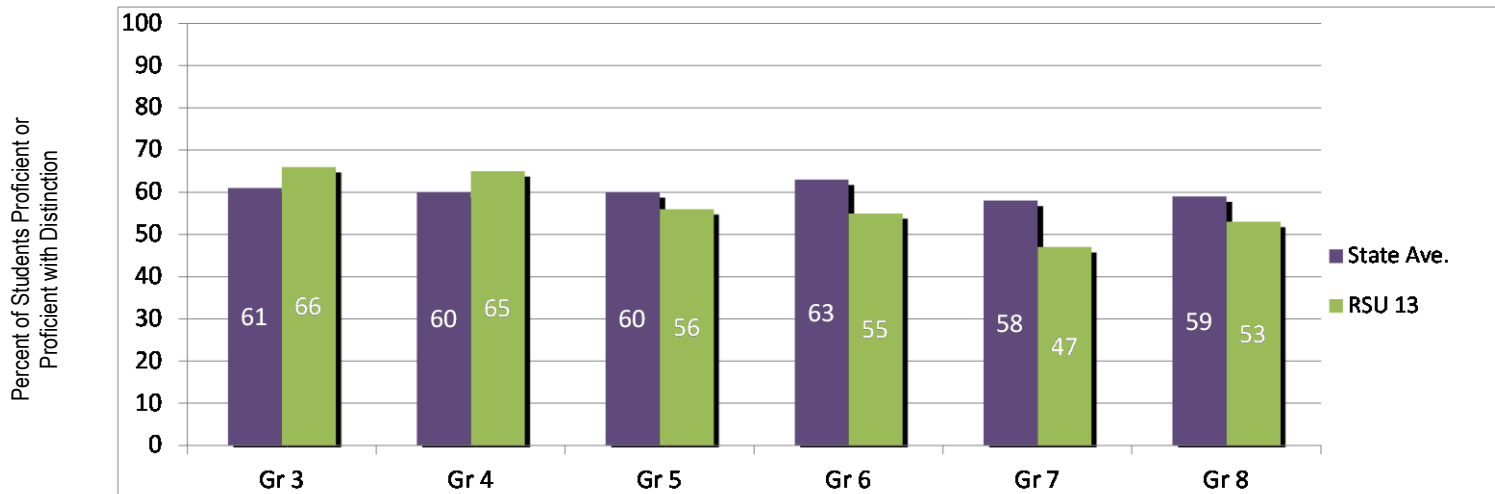
- Slight variations may be noted between this summary document and Maine’s Comprehensive Assessment System Reporting. These occur in grade 5 reading, and in grades 4, 6, & 8 mathematics and account for no more than one percentage point variation in reported RSU 13 scores. These variations occur due to corrected enrollment and participation data within RSU 13 reporting. We are informed by Maine’s Comprehensive Assessment System that these corrections will not be made in State level reporting unless they impact the calculation of Adequate Yearly Progress status outcomes.*

RSU 13
District NECAP Summary – Fall 2010

Reading

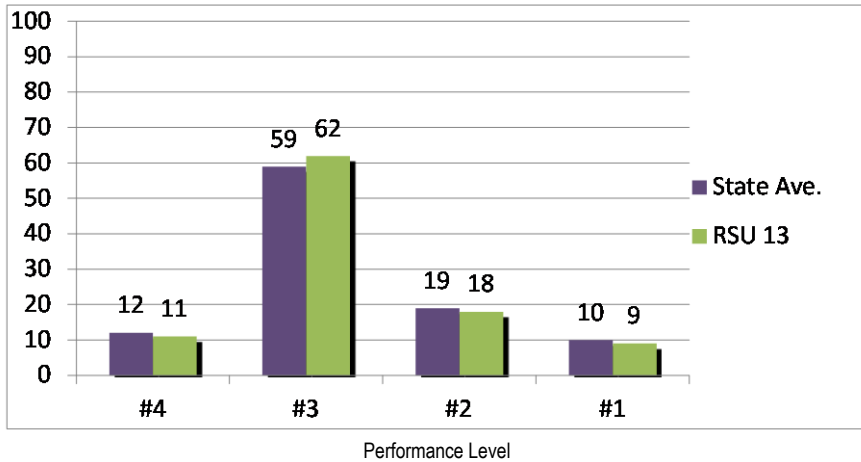


Mathematics

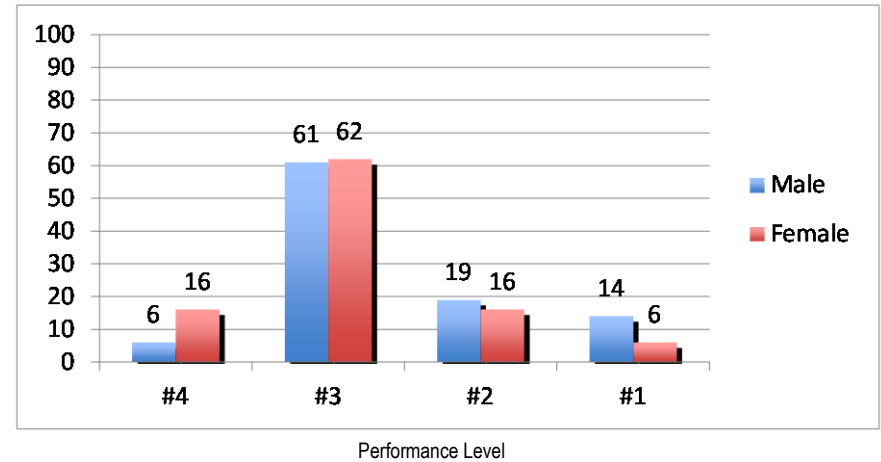


Grade 3 Reading

Percent of Students



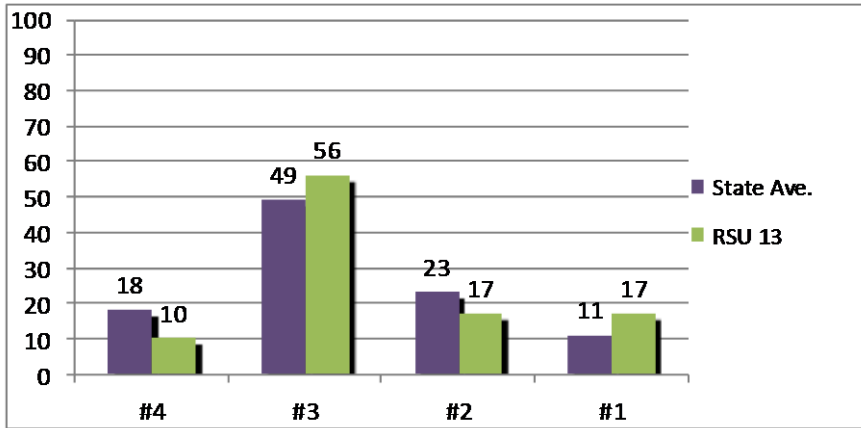
Percent of Students



School	Gender	Total # of Students Tested Fall 2010	Number Proficient With Distinction (4)	Percent % Proficient With Distinction (4)	Number Proficient (3)	Percent % Proficient (3)	Number Partially Proficient (2)	Percent % Partially Proficient (2)	Number Below Proficient (1)	Percent % Below Proficient (1)
CCS	Male	6	2	33.3%	2	33.3%	2	33.3%	0	0%
CCS	Female	10	4	40%	4	40%	2	20%	0	0%
LL	Male	11	1	9%	9	82%	1	9%	0	0%
LL	Female	10	1	10%	9	90%	0	0%	0	0%
OHCS	Male	6	0	0%	4	67%	1	17%	1	17%
OHCS	Female	11	0	0%	10	91%	1	9%	0	0%
SS	Male	22	0	0%	13	59%	3	14%	6	27%
SS	Female	25	3	12%	15	60%	4	16%	3	12%
STG	Male	12	0	0%	7	58%	4	33%	1	8%
STG	Female	12	3	25%	4	33%	4	33%	1	8%
Total	Male	57	3	6%	35	61%	11	19%	8	14%
Total	Female	68	11	16%	42	62%	11	16%	4	6%
Total Students		125	14	11%	77	62%	22	18%	12	9%

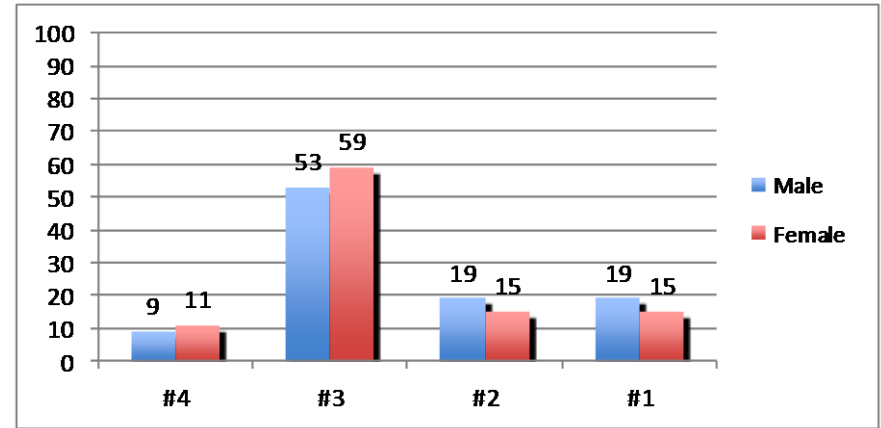
Grade 3 Mathematics

Percent of Students



Performance Level

Percent of Students

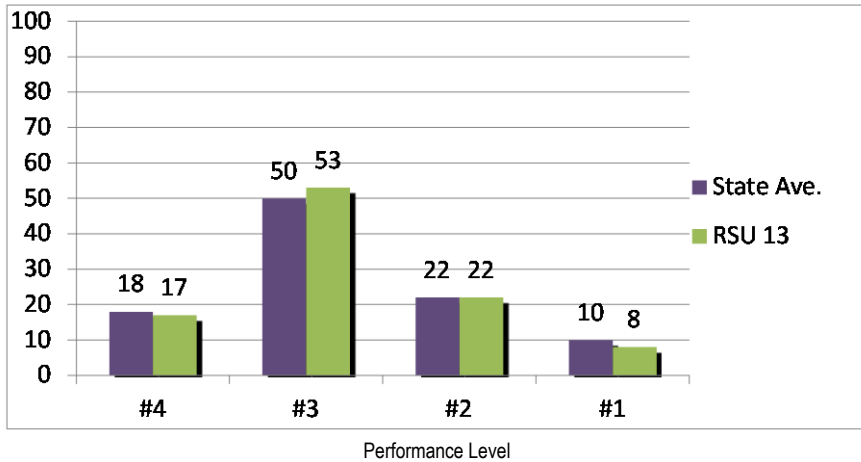


Performance Level

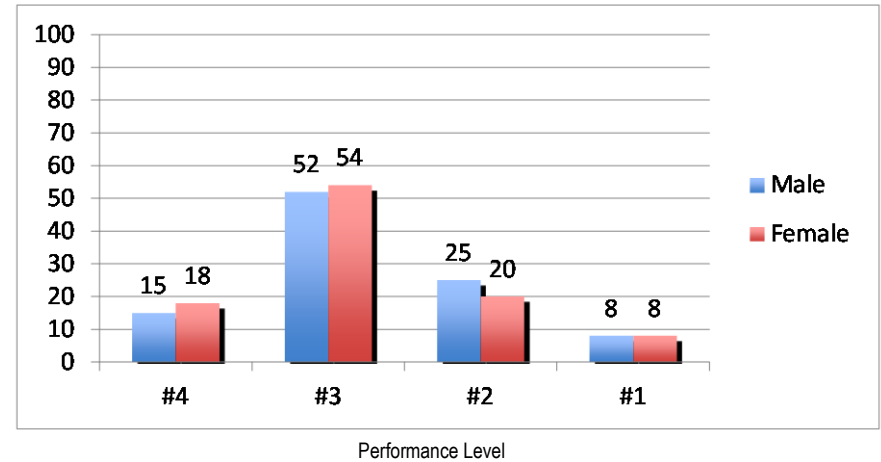
School	Gender	Total # of Students Tested Fall 2010	Number Proficient With Distinction (4)	Percent % Proficient With Distinction (4)	Number Proficient (3)	Percent % Proficient (3)	Number Partially Proficient (2)	Percent % Partially Proficient (2)	Number Below Proficient (1)	Percent % Below Proficient (1)
CC	Male	6	1	17%	5	83%	0	0%	0	0%
	Female	10	2	20%	5	50%	2	20%	1	10%
LL	Male	11	2	18%	6	55%	3	27%	0	0%
	Female	10	2	20%	5	50%	3	30%	0	0%
OHCS	Male	6	2	33%	3	50%	0	0%	1	17%
	Female	11	1	9%	10	91%	0	0%	0	0%
SS	Male	22	0	0%	13	59%	3	14%	6	27%
	Female	25	3	12%	15	60%	4	16%	3	12%
STG	Male	12	0	0%	3	25%	5	42%	4	33%
	Female	12	0	0%	5	42%	1	8%	6	50%
Total	Male	57	5	9%	30	53%	11	19%	11	19%
Total	Female	68	8	11%	40	59%	10	15%	10	15%
Total Students		125	13	10%	70	56%	21	17%	21	17%

Grade 4 Reading

Percent of Students



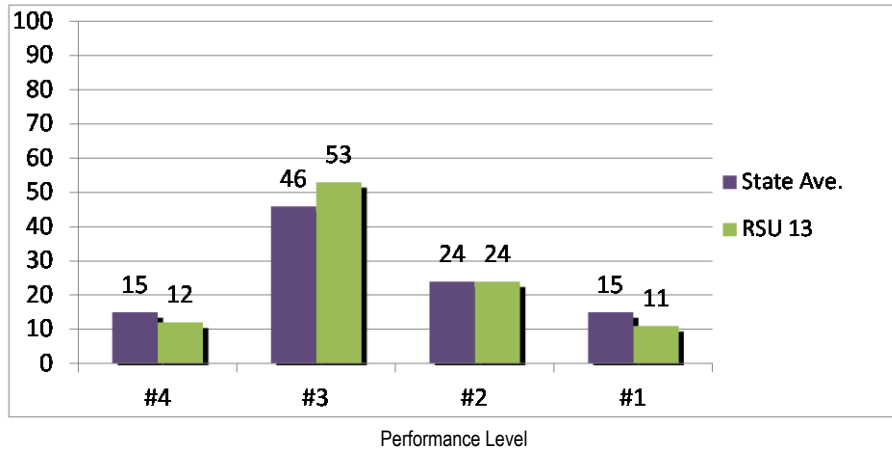
Percent of Students



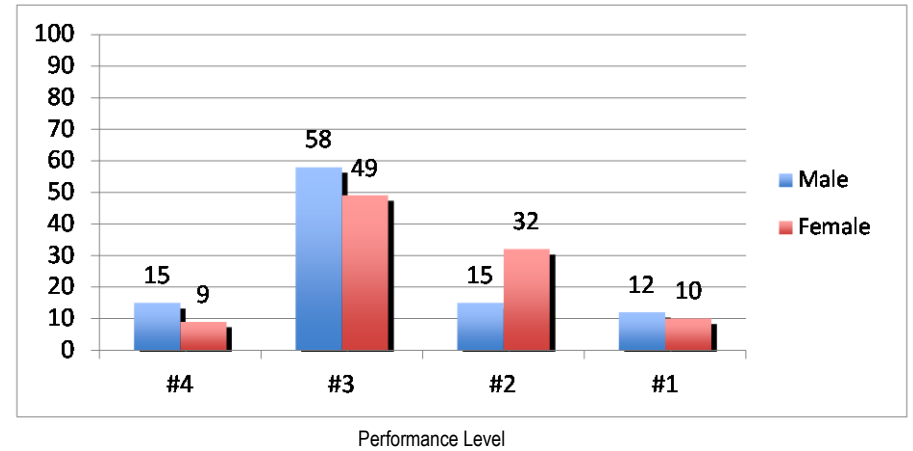
School	Gender	Total # of Students Tested Fall 2010	Number Proficient With Distinction (4)	Percent % Proficient With Distinction (4)	Number Proficient (3)	Percent % Proficient (3)	Number Partially Proficient (2)	Percent % Partially Proficient (2)	Number Below Proficient (1)	Percent % Below Proficient (1)
CCS	Male	7	3	43%	2	29%	1	14%	1	14%
CCS	Female	8	1	12%	3	38%	3	38%	1	12%
LLS	Male	10	1	10%	9	90%	0	0%	0	0%
LLS	Female	20	4	20%	12	60%	4	20%	0	0%
OHCS	Male	11	1	9%	7	64%	3	27%	0	0%
OHCS	Female	10	2	20%	4	40%	2	20%	2	20%
SS	Male	22	3	14%	8	36%	8	36%	3	14%
SS	Female	26	5	19%	16	62%	3	12%	2	8%
STG	Male	17	2	12%	9	53%	5	29%	1	6%
STG	Female	7	1	14%	3	43%	2	29%	1	14%
Total	Male	67	10	15%	35	52%	17	25%	5	8%
Total	Female	71	13	18%	38	54%	14	20%	6	8%
Total Students		138	23	17%	73	53%	31	22%	11	8%

Grade 4 Mathematics

Percent of Students



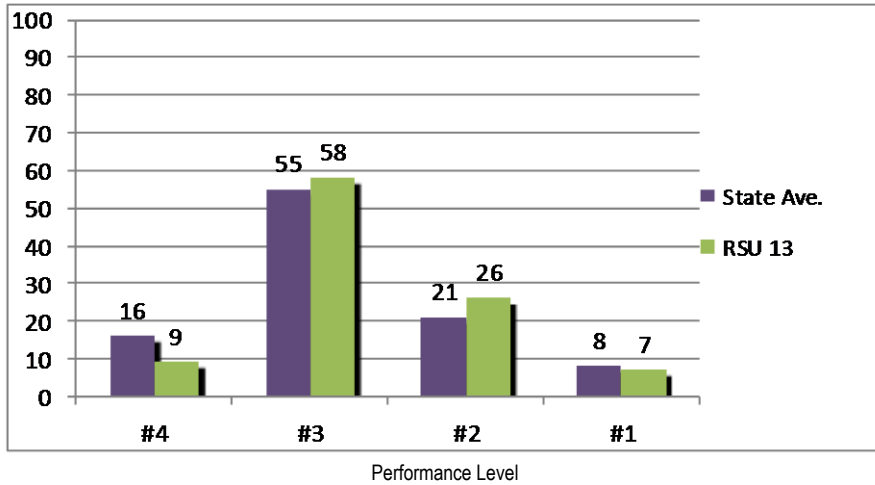
Percent of Students



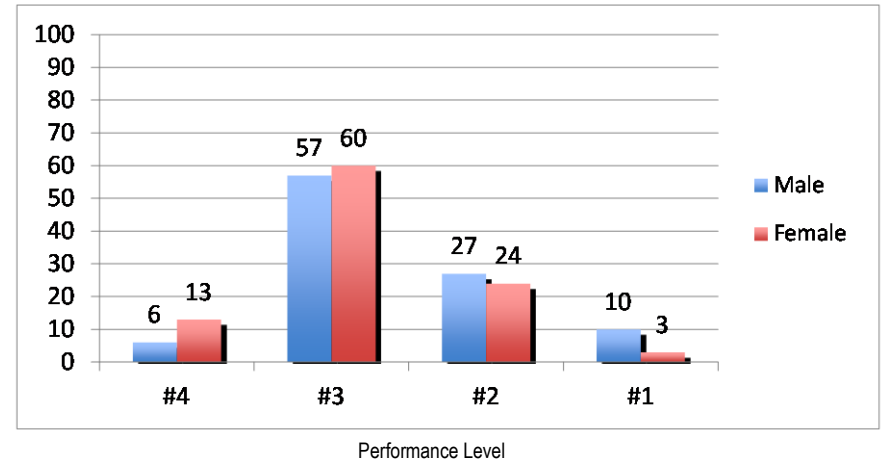
School	Gender	Total # of Students Tested Fall 2010	Number Proficient With Distinction (4)	Percent % Proficient With Distinction (4)	Number Proficient (3)	Percent % Proficient (3)	Number Partially Proficient (2)	Percent % Partially Proficient (2)	Number Below Proficient (1)	Percent % Below Proficient (1)
CCS	Male	7	3	43%	2	29%	1	14%	1	14%
CCS	Female	8	0	0%	4	50%	4	50%	0	0%
LLS	Male	10	0	0%	8	80%	2	20%	0	0%
LLS	Female	20	1	5%	10	50%	9	45%	0	0%
OHCS	Male	11	3	27%	7	64%	0	0%	1	9%
OHCS	Female	10	0	0%	6	60%	2	20%	2	20%
SS	Male	21	4	19%	11	52%	6	29%	0	0%
SS	Female	26	5	19%	12	46%	5	19%	4	15%
STG	Male	17	0	0%	10	59%	1	6%	6	35%
STG	Female	7	0	0%	3	43%	3	43%	1	14%
Total	Male	66	10	15%	38	58%	10	15%	8	12%
Total	Female	71	6	9%	35	49%	23	32%	7	10%
Total Students		137	16	12%	73	53%	33	24%	15	11%

Grade 5 Reading

Percent of Students



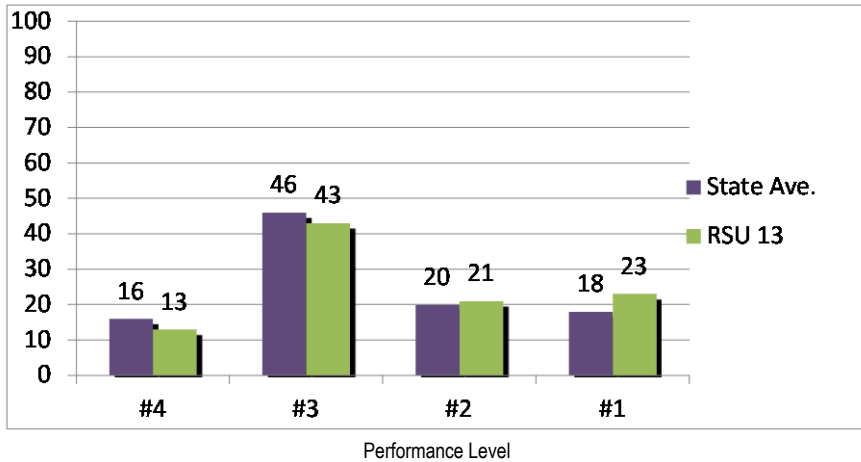
Percent of Students



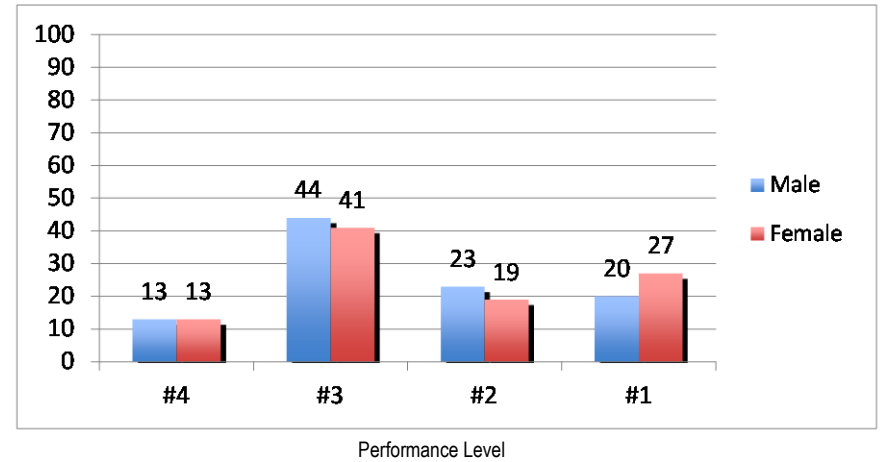
School	Gender	Total # of Students Tested Fall 2010	Number Proficient With Distinction (4)	Percent % Proficient With Distinction (4)	Number Proficient (3)	Percent % Proficient (3)	Number Partially Proficient (2)	Percent % Partially Proficient (2)	Number Below Proficient (1)	Percent % Below Proficient (1)
OHCS	Male	13	0	0%	11	85%	2	15%	0	0%
OHCS	Female	6	0	0%	5	83%	1	17%	0	0%
RDMS	Male	28	0	0%	14	50%	11	39%	3	11%
RDMS	Female	28	3	11%	15	54%	8	29%	2	7%
STG	Male	12	4	33%	4	33%	1	8%	3	25%
STG	Female	13	3	23%	8	62%	2	15%	0	0%
TGS	Male	17	0	0%	11	65%	5	29%	1	6%
TGS	Female	23	3	13%	14	61%	6	26%	0	0%
Total	Male	70	4	6%	40	57%	19	27%	7	10%
Total	Female	70	9	13%	42	60%	17	24%	2	3%
Total Students		140	13	9%	82	58%	36	26%	9	7%

Grade 5 Mathematics

Percent of Students



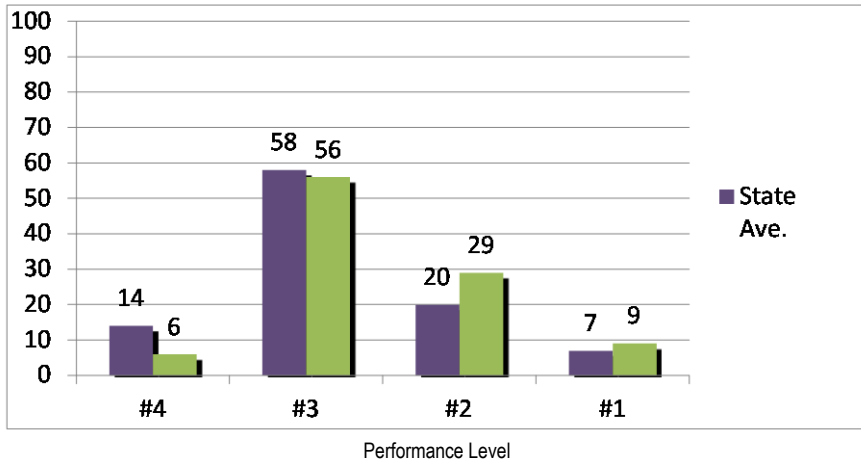
Percent of Students



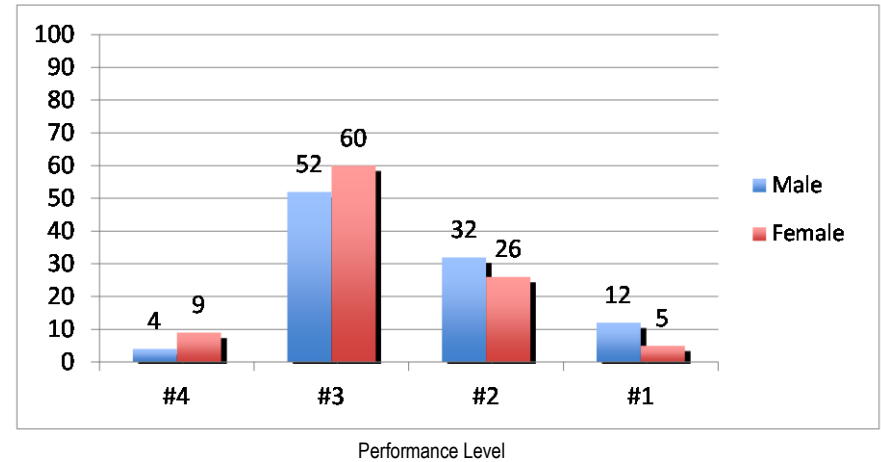
School	Gender	Total # of Students Tested Fall 2010	Number Proficient With Distinction (4)	Percent % Proficient With Distinction (4)	Number Proficient (3)	Percent % Proficient (3)	Number Partially Proficient (2)	Percent % Partially Proficient (2)	Number Below Proficient (1)	Percent % Below Proficient (1)
OHCS	Male	13	2	15%	7	54%	3	23%	1	8%
OHCS	Female	6	3	50%	1	17%	2	33%	0	0%
RDMS	Male	28	3	11%	17	61%	5	18%	3	11%
RDMS	Female	28	4	14%	14	50%	3	11%	7	25%
STG	Male	12	3	25%	4	33%	4	33%	1	8%
STG	Female	13	1	8%	8	62%	2	15%	2	15%
TGS	Male	17	1	6%	3	18%	4	24%	9	53%
TGS	Female	23	1	4%	6	26%	6	26%	10	43%
Total	Male	70	9	13%	31	44%	16	23%	14	20%
Total	Female	70	9	13%	29	41%	13	19%	19	27%
Total Students		140	18	13%	60	43%	29	21%	33	23%

Grade 6 Reading

Percent of Students



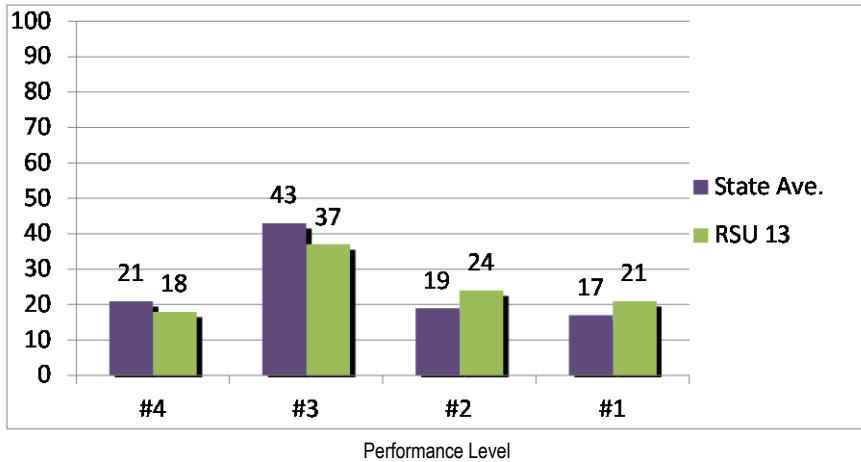
Percent of Students



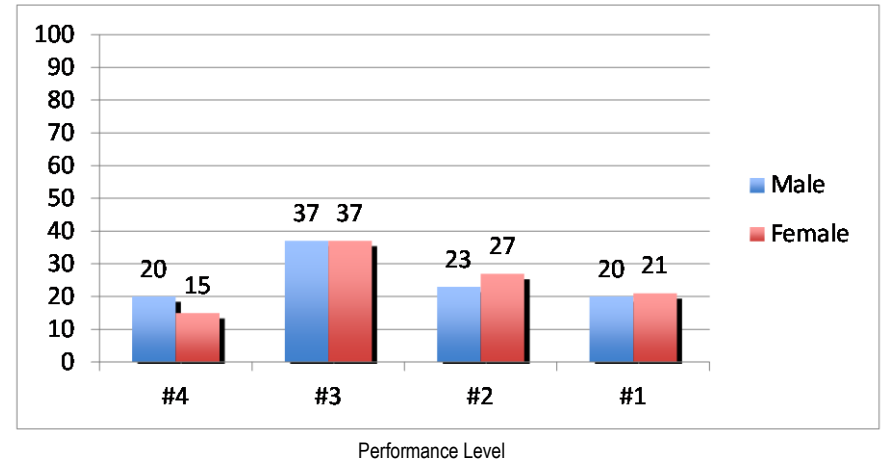
School	Gender	Total # of Students Tested Fall 2010	Number Proficient With Distinction (4)	Percent % Proficient With Distinction (4)	Number Proficient (3)	Percent % Proficient (3)	Number Partially Proficient (2)	Percent % Partially Proficient (2)	Number Below Proficient (1)	Percent % Below Proficient (1)
RDMS	Male	43	2	5%	18	42%	13	30%	10	23%
RDMS	Female	48	5	10%	23	48%	16	33%	4	8%
STG	Male	10	0	0%	8	80%	2	20%	0	0%
STG	Female	8	0	0%	6	75%	2	25%	0	0%
TGS	Male	26	1	4%	15	58%	10	38%	0	0%
TGS	Female	22	2	9%	18	82%	2	9%	0	0%
Total	Male	79	3	4%	41	52%	25	32%	10	12%
Total	Female	78	7	9%	47	60%	20	26%	4	5%
Total Students		157	10	6%	88	56%	45	29%	14	9%

Grade 6 Mathematics

Percent of Students



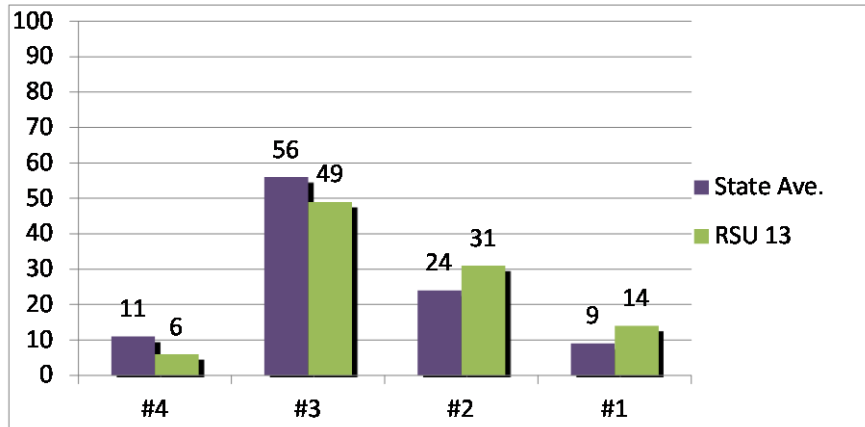
Percent of Students



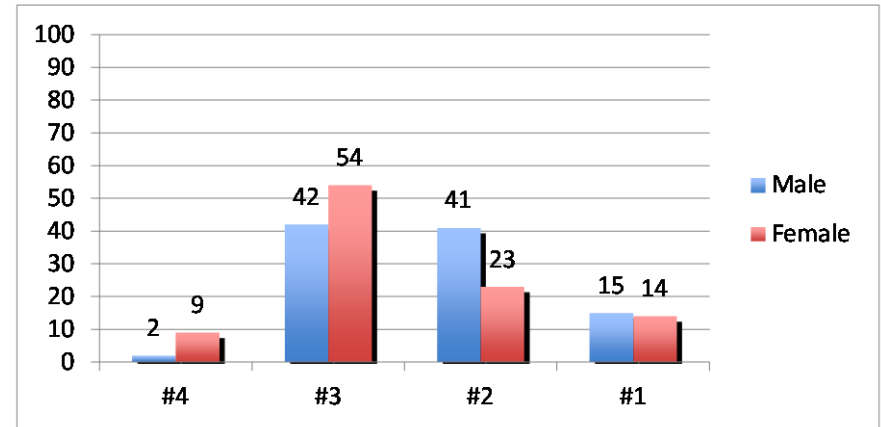
School	Gender	Total # of Students Tested Fall 2010	Number Proficient With Distinction (4)	Percent % Proficient With Distinction (4)	Number Proficient (3)	Percent % Proficient (3)	Number Partially Proficient (2)	Percent % Partially Proficient (2)	Number Below Proficient (1)	Percent % Below Proficient (1)
RDMS	Male	43	12	28%	13	30%	7	16%	11	26%
RDMS	Female	48	10	21%	14	29%	13	27%	11	23%
STG	Male	10	2	20%	6	60%	2	20%	0	0%
STG	Female	8	1	13%	4	50%	2	25%	1	13%
TGS	Male	26	2	8%	10	38%	9	35%	5	19%
TGS	Female	23	1	4%	11	48%	6	26%	5	22%
Total	Male	79	16	20%	29	37%	18	23%	16	20%
Total	Female	79	12	15%	29	37%	21	27%	17	21%
Total Students		158	28	18%	58	37%	39	24%	33	21%

Grade 7 Reading

Percent of Students



Percent of Students



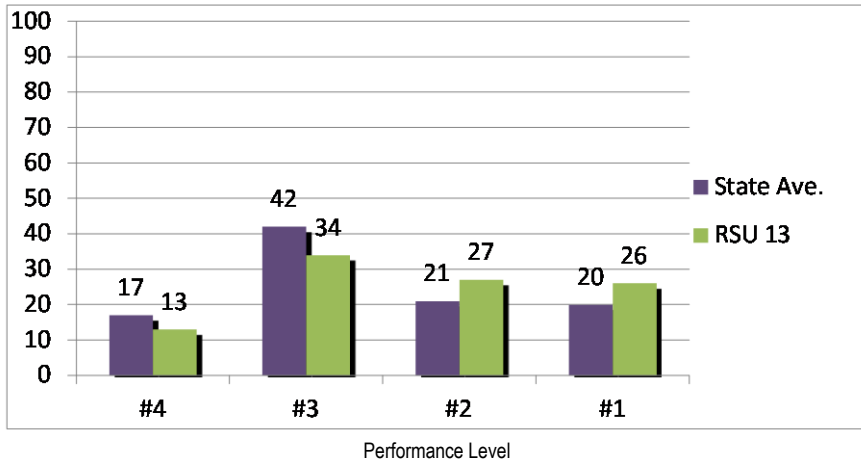
Performance Level

Performance Level

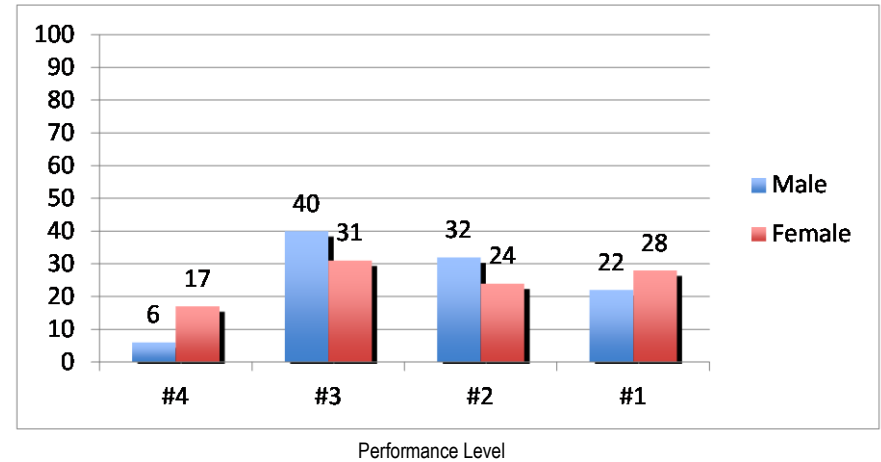
School	Gender	Total # of Students Tested Fall 2010	Number Proficient With Distinction (4)	Percent % Proficient With Distinction (4)	Number Proficient (3)	Percent % Proficient (3)	Number Partially Proficient (2)	Percent % Partially Proficient (2)	Number Below Proficient (1)	Percent % Below Proficient (1)
RDMS	Male	39	1	3%	15	38%	16	41%	7	18%
RDMS	Female	57	2	4%	32	56%	15	26%	8	14%
██████	██████	██████	██████	██████	██████	██████	██████	██████	██████	██████
STG	Male	10	0	0%	7	70%	3	30%	0	0%
STG	Female	11	0	0%	7	64%	2	18%	2	18%
██████	██████	██████	██████	██████	██████	██████	██████	██████	██████	██████
TGS	Male	17	0	0%	6	35%	8	47%	3	18%
TGS	Female	25	7	28%	11	44%	4	16%	3	12%
██████	██████	██████	██████	██████	██████	██████	██████	██████	██████	██████
Total	Male	66	1	2%	28	42%	27	41%	10	15%
Total	Female	93	9	9%	50	54%	21	23%	13	14%
Total Students		159	10	6%	78	49%	48	31%	23	14%

Grade 7 Mathematics

Percent of Students



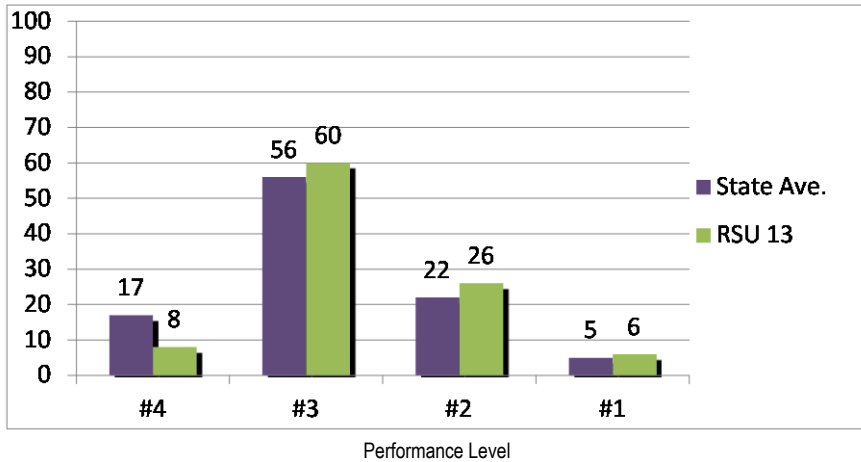
Percent of Students



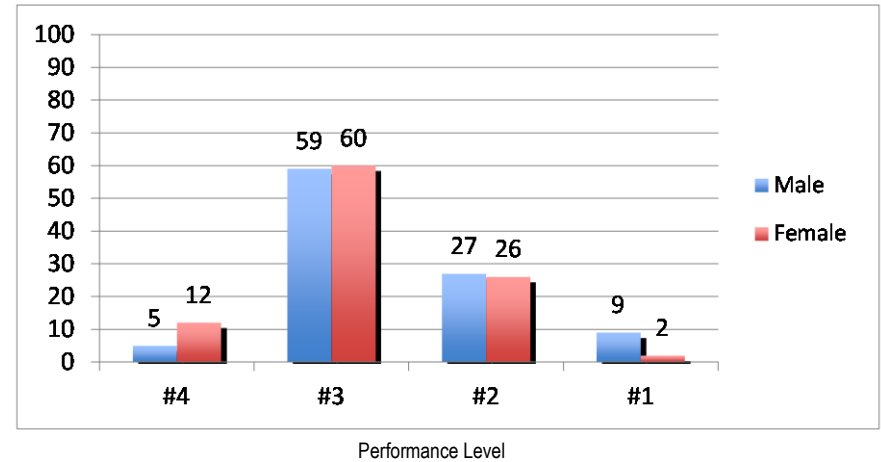
School	Gender	Total # of Students Tested Fall 2010	Number Proficient With Distinction (4)	Percent % Proficient With Distinction (4)	Number Proficient (3)	Percent % Proficient (3)	Number Partially Proficient (2)	Percent % Partially Proficient (2)	Number Below Proficient (1)	Percent % Below Proficient (1)
RDMS	Male	38	4	11%	20	53%	8	21%	6	16%
RDMS	Female	57	13	23%	18	32%	11	19%	15	26%
STG	Male	10	0	0%	2	20%	6	60%	2	20%
STG	Female	11	0	0%	3	27%	4	36%	4	36%
TGS	Male	17	0	0%	4	24%	7	41%	6	35%
TGS	Female	24	3	13%	7	29%	7	29%	7	29%
Total	Male	65	4	6%	26	40%	21	32%	14	22%
Total	Female	92	16	17%	28	31%	22	24%	26	28%
Total Students		157	20	13%	54	34%	43	27%	40	26%

Grade 8 Reading

Percent of Students



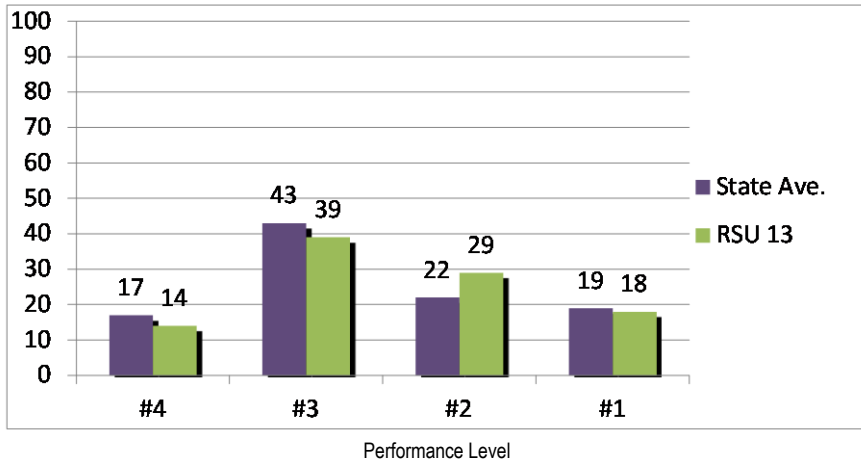
Percent of Students



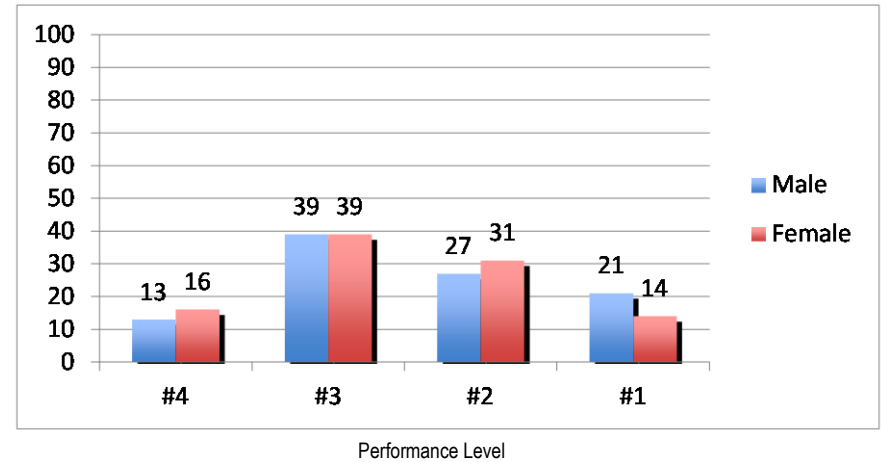
School	Gender	Total # of Students Tested Fall 2010	Number Proficient With Distinction (4)	Percent % Proficient With Distinction (4)	Number Proficient (3)	Percent % Proficient (3)	Number Partially Proficient (2)	Percent % Partially Proficient (2)	Number Below Proficient (1)	Percent % Below Proficient (1)
STG	Male	20	1	5%	14	70%	4	20%	1	5%
STG	Female	13	2	15%	6	46%	5	38%	0	0%
RDMS	Male	51	1	2%	28	55%	16	31%	6	12%
RDMS	Female	54	7	13%	34	63%	13	24%	0	0%
TGS	Male	30	3	10%	18	60%	7	23%	2	7%
TGS	Female	23	2	9%	14	61%	5	22%	2	9%
Total	Male	101	5	5%	60	59%	27	27%	9	9%
Total	Female	90	11	12%	54	60%	23	26%	2	2%
Total Students		191	16	8%	114	60%	50	26%	11	6%

Grade 8 Mathematics

Percent of Students



Percent of Students



School	Gender	Total # of Students Tested Fall 2010	Number Proficient With Distinction (4)	Percent % Proficient With Distinction (4)	Number Proficient (3)	Percent % Proficient (3)	Number Partially Proficient (2)	Percent % Partially Proficient (2)	Number Below Proficient (1)	Percent % Below Proficient (1)
STG	Male	20	1	5%	7	35%	8	40%	4	20%
STG	Female	13	1	8%	3	23%	6	46%	3	23%
RDMS	Male	51	5	10%	19	37%	15	29%	12	24%
RDMS	Female	54	12	22%	26	48%	12	22%	4	7%
TGS	Male	30	7	23%	14	47%	4	13%	5	17%
TGS	Female	23	1	4%	6	26%	10	43%	6	26%
Total	Male	101	13	13%	40	39%	27	27%	21	21%
Total	Female	90	14	16%	35	39%	28	31%	13	14%
Total Students		191	27	14%	75	39%	55	29%	34	18%