

REGIONAL SCHOOL UNIT 13

New England Common Assessment Program Study (NECAP) – Fall 2102 Maine High School Assessment (MHSA) – Spring 2013

Table of Contents:

Page 1	District summary results for reading & mathematics for grades 3 – 8, and grade 11 – indicating the percent of RSU 13 students proficient or proficient with distinction compared to the State average.
Pages 2 – 14	Grade level summaries and individual school results for reading & mathematics indicating the percent of RSU 13 students in each NCLB performance category compared to the State average. These summaries also highlight gender performance for each grade in reading and mathematics.
Pages 3 – 4	Grade 3 reading & mathematics
Pages 5 – 6	Grade 4 reading & mathematics
Pages 7 – 8	Grade 5 reading & mathematics
Pages 9 –10	Grade 6 reading & mathematics
Pages 11–12	Grade 7 reading & mathematics
Pages 13–14	Grade 8 reading & mathematics
Pages 15-16	Grade 11 reading & Mathematics

Achievement Level Descriptors

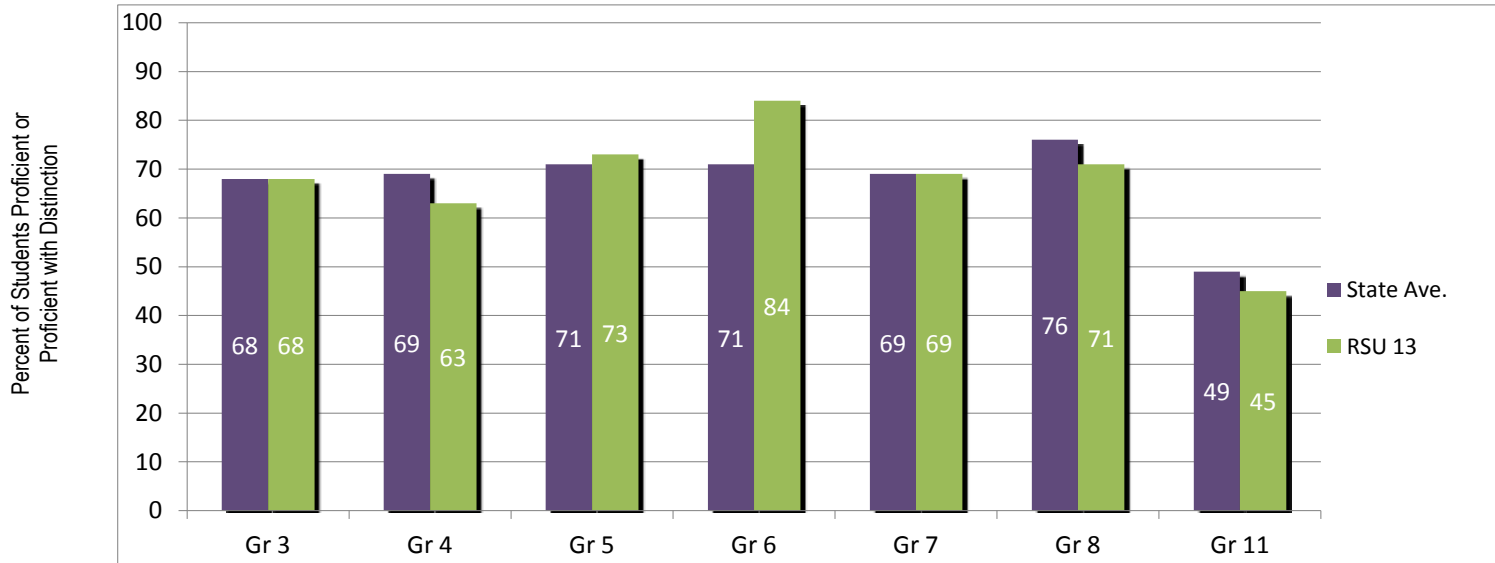
#4 =	Proficient With Distinction
# 3 =	Proficient
# 2 =	Partially Proficient
# 1 =	Substantially Below Proficient

Explanatory Notes:

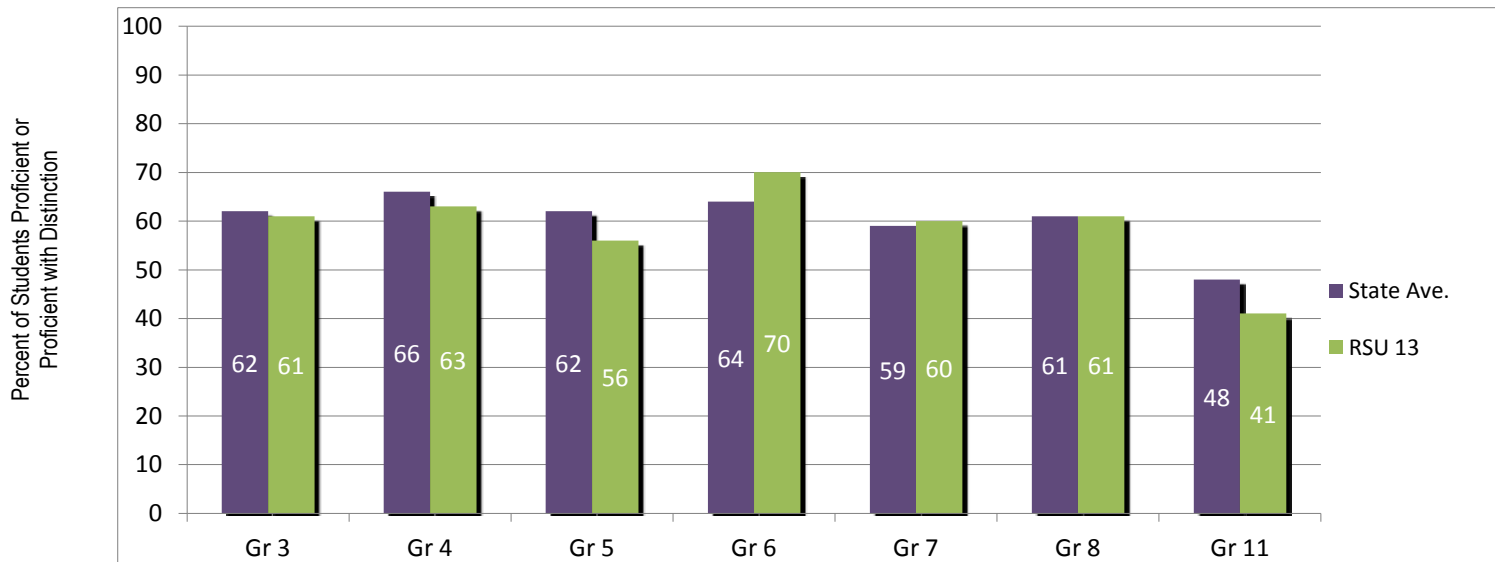
- Slight variations may be noted between this summary document and Maine’s Comprehensive Assessment System Reporting. These variations occur due to corrected enrollment and participation data within RSU 13 reporting. We are informed by Maine’s Comprehensive Assessment System that these corrections will not be made in State level reporting unless they impact the calculation of Adequate Yearly Progress status outcomes.*

RSU 13
District NCLB Summary – Fall 2012 & Spring 2013

Reading

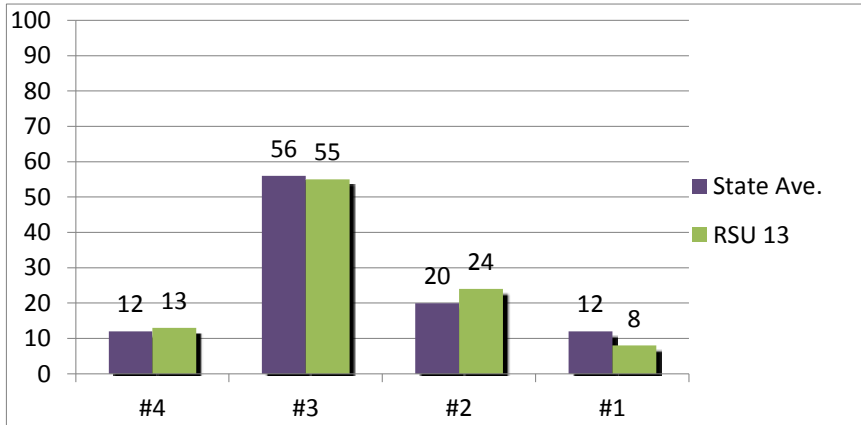


Mathematics



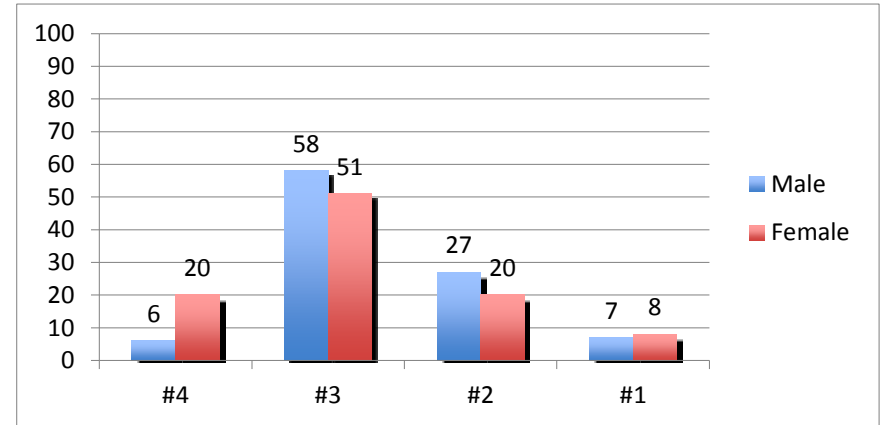
Grade 3 Reading - NECAP

Percent of Students



Performance Level

Percent of Students

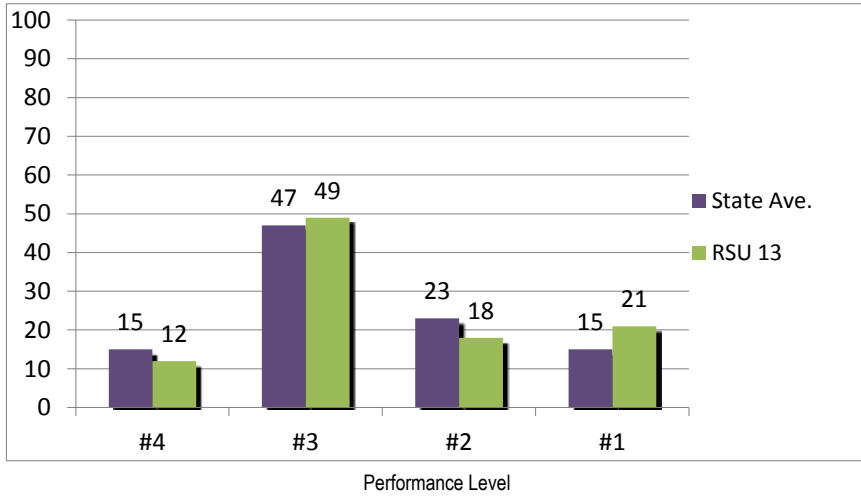


Performance Level

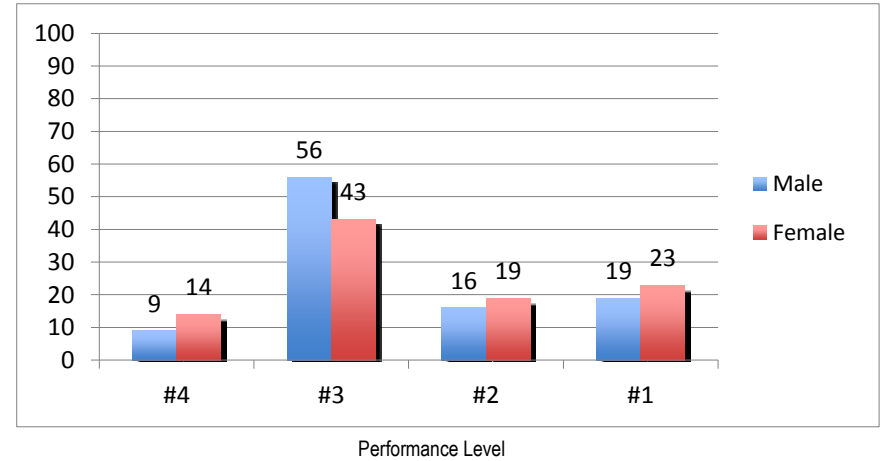
School	Gender	Total # of Students Tested Fall 2012	Number Proficient With Distinction (4)	Percent % Proficient With Distinction (4)	Number Proficient (3)	Percent % Proficient (3)	Number Partially Proficient (2)	Percent % Partially Proficient (2)	Number Below Proficient (1)	Percent % Below Proficient (1)
CCS	Male	4	0	0%	4	100%	0	0%	0	0%
CCS	Female	8	3	38%	3	38%	2	25%	0	0%
LL	Male	13	0	0%	10	77%	2	15%	1	8%
LL	Female	19	7	37%	8	42%	2	11%	2	11%
OHCS	Male	15	1	7%	11	73%	1	7%	2	13%
OHCS	Female	20	2	10%	10	50%	6	30%	2	10%
SS	Male	40	4	10%	20	50%	13	33%	3	8%
SS	Female	24	3	13%	13	54%	5	21%	3	13%
STG	Male	8	0	0%	2	25%	6	75%	0	0%
STG	Female	13	2	15%	9	69%	2	15%	0	0%
Total	Male	81	5	6%	47	57%	22	27%	6	7%
Total	Female	84	17	20%	43	51%	17	20%	7	8%
Total Students		165	22	13%	90	55%	39	24%	13	8%

Grade 3 Mathematics - NECAP

Percent of Students



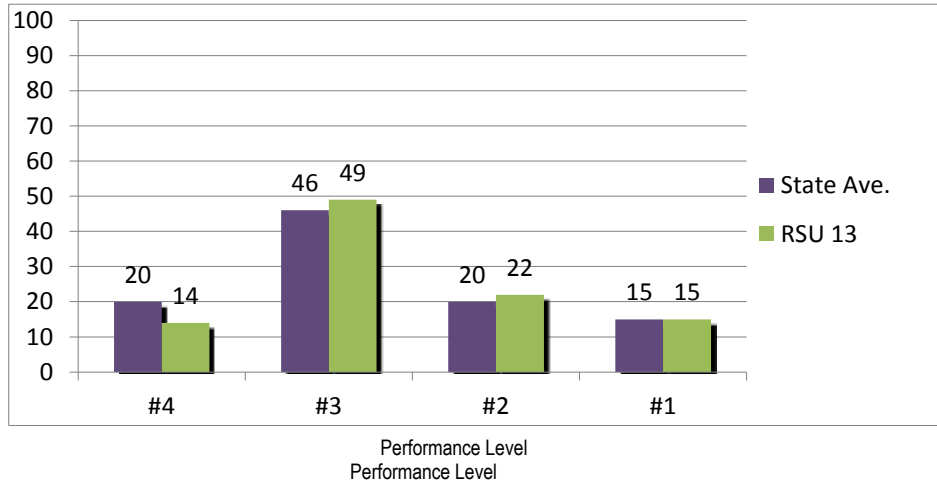
Percent of Students



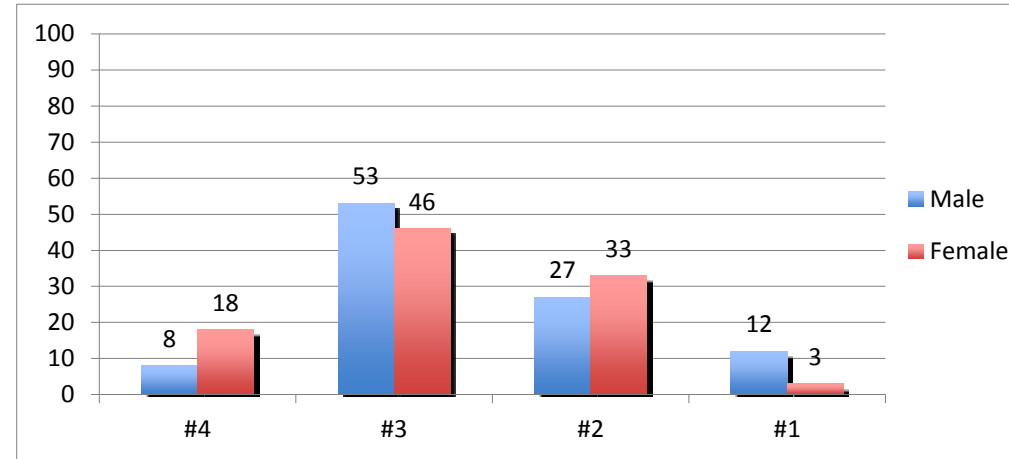
School	Gender	Total # of Students Tested Fall 2012	Number Proficient With Distinction (4)	Percent % Proficient With Distinction (4)	Number Proficient (3)	Percent % Proficient (3)	Number Partially Proficient (2)	Percent % Partially Proficient (2)	Number Below Proficient (1)	Percent % Below Proficient (1)
CC	Male	4	1	25%	2	50%	0	0%	1	25%
CC	Female	8	2	25%	4	50%	2	25%	0	0%
LL	Male	13	1	8%	11	85%	0	0%	1	8%
LL	Female	19	3	16%	11	58%	4	21%	1	5%
OHCS	Male	15	3	20%	8	53%	2	13%	1	13%
OHCS	Female	20	4	20%	4	20%	6	30%	6	30%
SS	Male	41	2	5%	21	51%	9	22%	9	22%
SS	Female	23	2	9%	9	39%	3	13%	9	39%
STG	Male	8	0	0%	3	38%	2	25%	3	38%
STG	Female	13	1	8%	8	62%	1	8%	3	23%
Total	Male	81	7	9%	45	56%	13	16%	15	19%
Total	Female	83	12	14%	36	43%	16	19%	19	23%
Total Students		164	19	12%	81	49%	29	18%	34	21%

Grade 4 Reading - NECAP

Percent of Students



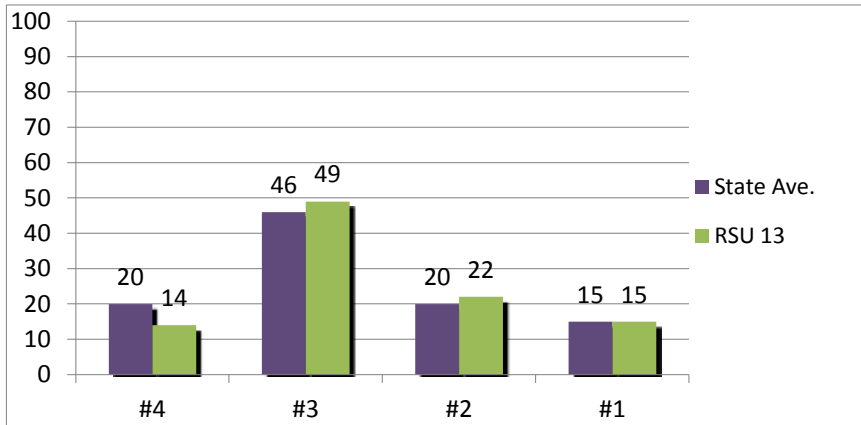
Percent of Students



School	Gender	Total # of Students Tested Fall 2012	Number Proficient With Distinction (4)	Percent % Proficient With Distinction (4)	Number Proficient (3)	Percent % Proficient (3)	Number Partially Proficient (2)	Percent % Partially Proficient (2)	Number Below Proficient (1)	Percent % Below Proficient (1)
CCS	Male	11	2	18%	5	45%	3	27%	1	9%
CCS	Female	5	2	40%	3	60%	0	0%	0	0%
LLS	Male	20	1	5%	12	60%	7	25%	0	0%
LLS	Female	16	0	0%	9	56%	6	38%	1	6%
OHCS	Male	12	2	17%	6	50%	2	17%	2	17%
OHCS	Female	17	7	41%	4	24%	6	35%	0	0%
SS	Male	31	2	6%	13	42%	9	29%	7	23%
SS	Female	28	4	14%	13	46%	10	36%	1	4%
STG	Male	11	0	0%	9	82%	2	18%	0	0%
STG	Female	6								
Total	Male	85	7	8%	45	53%	23	27%	10	12%
Total	Female	72	13	18%	33	46%	24	33%	2	3%
Total Students		157	20	13%	78	50%	47	30%	12	8%

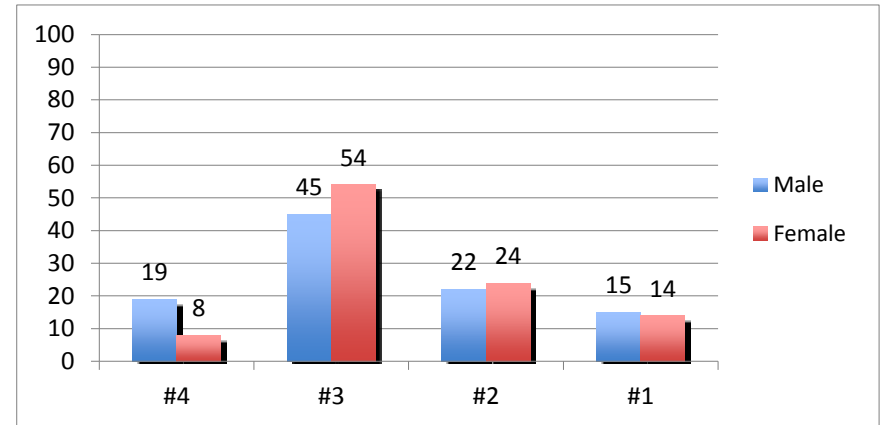
Grade 4 Mathematics - NECAP

Percent of Students



Performance Level

Percent of Students

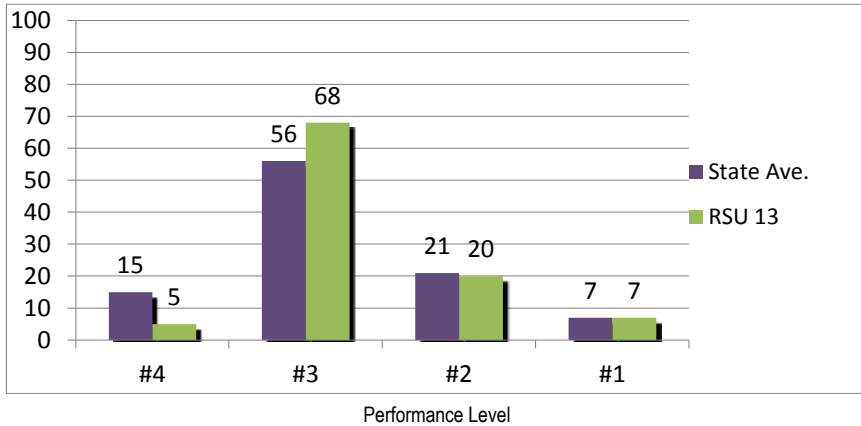


Performance Level

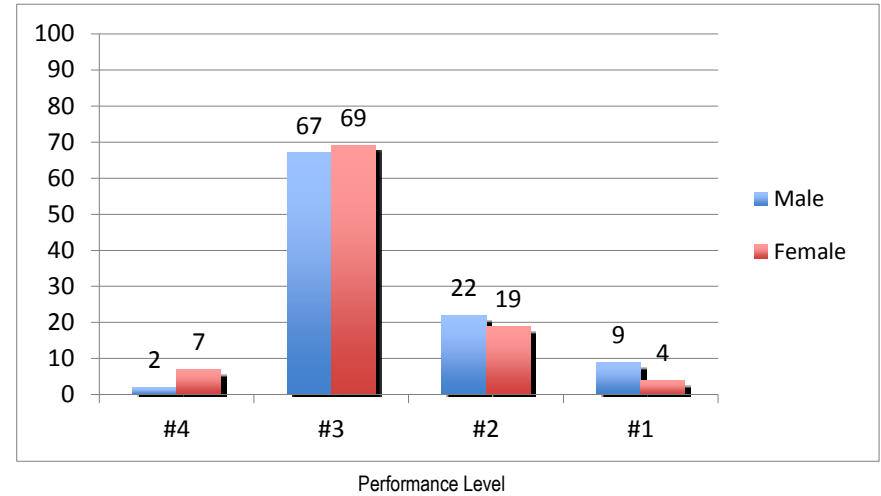
School	Gender	Total # of Students Tested Fall 2012	Number Proficient With Distinction (4)	Percent % Proficient With Distinction (4)	Number Proficient (3)	Percent % Proficient (3)	Number Partially Proficient (2)	Percent % Partially Proficient (2)	Number Below Proficient (1)	Percent % Below Proficient (1)
CCS	Male	11	4	36%	5	45%	3	19%	0	0%
CCS	Female	5	1	20%	3	60%	1	20%	0	0%
LLS	Male	20	2	10%	12	60%	5	25%	1	5%
LLS	Female	16	0	0%	7	44%	7	44%	2	13%
OHCS	Male	12	3	25%	4	33%	4	33%	1	8%
OHCS	Female	17	2	12%	12	71%	2	12%	1	6%
SS	Male	31	4	13%	13	42%	5	16%	9	29%
SS	Female	28	3	11%	13	46%	5	18%	7	25%
STG	Male	11	3	27%	4	36%	2	18%	2	18%
STG	Female	6	0	0%	4	66%	2	33%	0	0%
Total	Male	85	16	19%	38	45%	19	22%	13	15%
Total	Female	72	6	8%	39	54%	17	24%	10	14%
Total Students		157	22	14%	77	49%	36	23%	23	15%

Grade 5 Reading - NECAP

Percent of Students



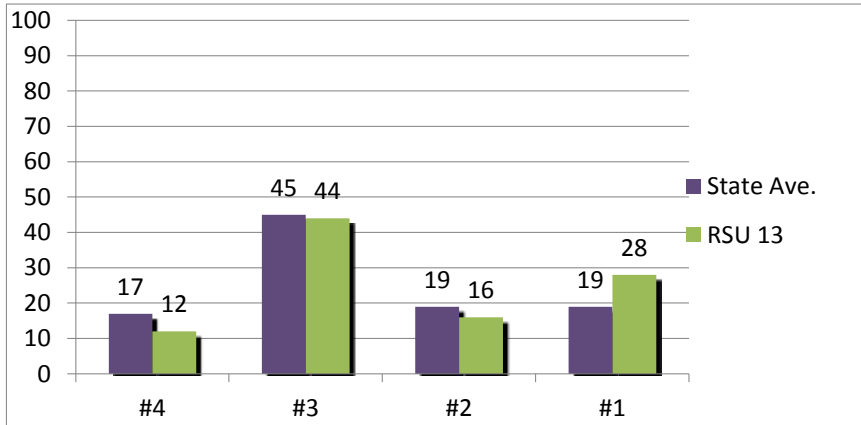
Percent of Students



School	Gender	Total # of Students Tested Fall 2012	Number Proficient With Distinction (4)	Percent % Proficient With Distinction (4)	Number Proficient (3)	Percent % Proficient (3)	Number Partially Proficient (2)	Percent % Partially Proficient (2)	Number Below Proficient (1)	Percent % Below Proficient (1)
OHCS	Male	5	0	0%	5	100%	0	0%	0	0%
OHCS	Female	10	0	0%	9	90%	1	10%	0	0%
RDMS	Male	24	0	0%	12	50%	8	33%	4	17%
RDMS	Female	17	0	0%	12	71%	3	18%	1	12%
STG	Male	12	0	0%	12	100%	0	0%	0	0%
STG	Female	9	1	11%	7	77%	1	11%	0	0%
TGS	Male	13	1	8%	7	54%	4	31%	1	8%
TGS	Female	18	3	17%	9	50%	5	28%	1	6%
Total	Male	54	1	2%	36	67%	12	22%	5	9%
Total	Female	54	4	7%	37	69%	10	19%	2	4%
Total Students		108	5	5%	73	68%	22	20%	7	6%

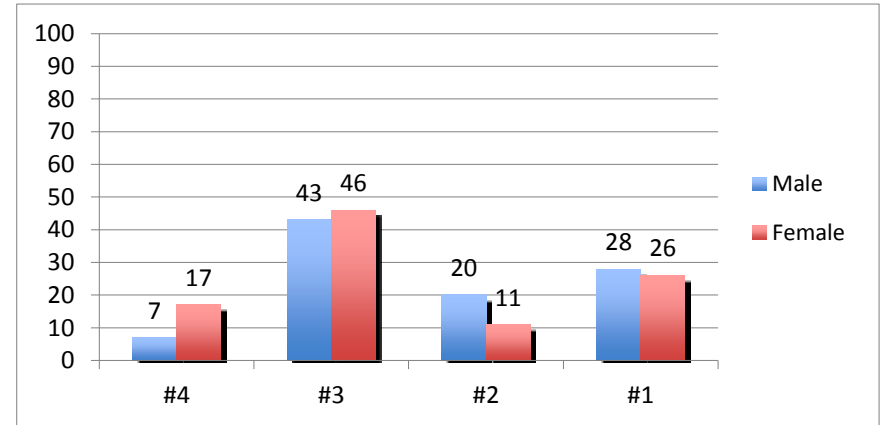
Grade 5 Mathematics - NECAP

Percent of Students



Performance Level

Percent of Students

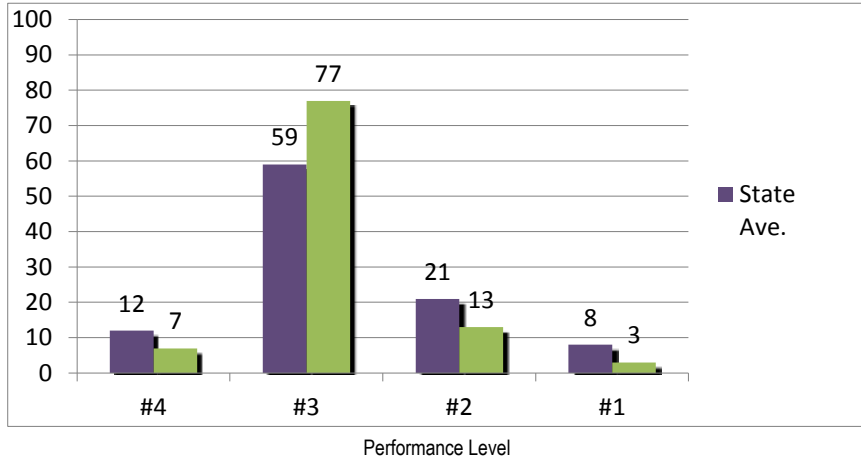


Performance Level

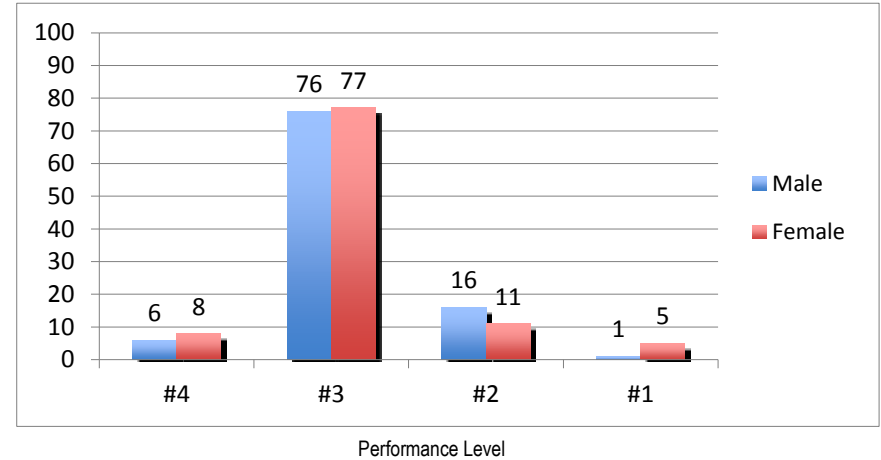
School	Gender	Total # of Students Tested Fall 2012	Number Proficient With Distinction (4)	Percent % Proficient With Distinction (4)	Number Proficient (3)	Percent % Proficient (3)	Number Partially Proficient (2)	Percent % Partially Proficient (2)	Number Below Proficient (1)	Percent % Below Proficient (1)
OHCS	Male	5	2	40%	3	60%	0	0%	0	0%
OHCS	Female	10	3	30%	7	70%	0	0%	0	0%
RDMS	Male	24	0	0%	11	46%	4	17%	9	38%
RDMS	Female	17	3	18%	6	35%	3	18%	5	29%
STG	Male	12	0	0%	2	17%	5	42%	4	42%
STG	Female	9	0	0%	4	44%	1	11%	4	44%
TGS	Male	13	2	15%	7	54%	2	15%	2	15%
TGS	Female	18	3	17%	8	44%	2	11%	5	28%
Total	Male	54	4	7%	23	43%	11	20%	15	28%
Total	Female	54	9	17%	25	46%	6	11%	14	26%
Total Students		108	13	12%	48	44%	17	16%	29	27%

Grade 6 Reading - NECAP

Percent of Students



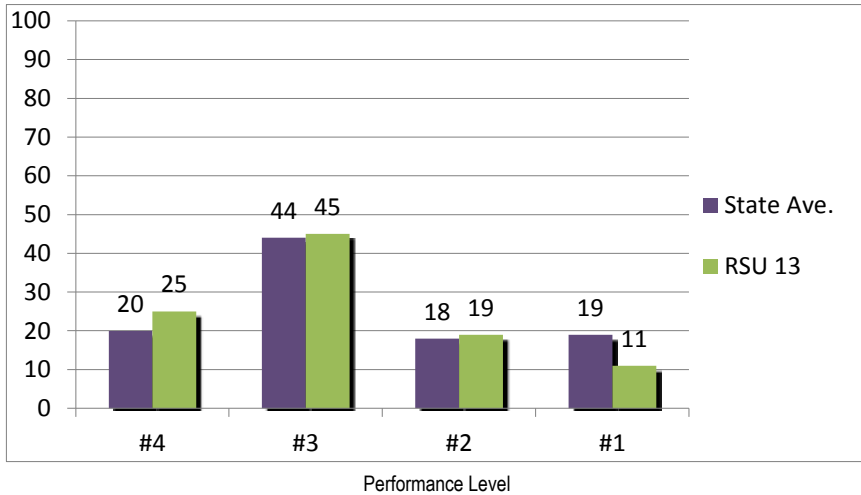
Percent of Students



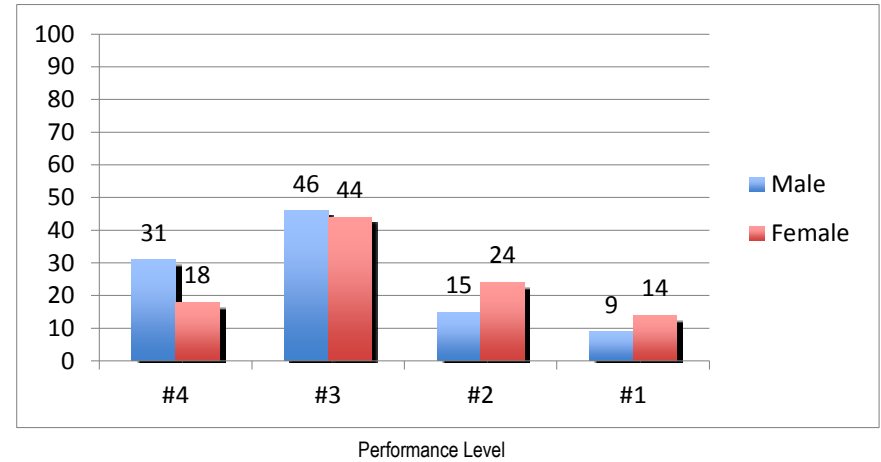
School	Gender	Total # of Students Tested Fall 2012	Number Proficient With Distinction (4)	Percent % Proficient With Distinction (4)	Number Proficient (3)	Percent % Proficient (3)	Number Partially Proficient (2)	Percent % Partially Proficient (2)	Number Below Proficient (1)	Percent % Below Proficient (1)
RDMS	Male	35	1	3%	26	74%	7	20%	1	3%
RDMS	Female	36	1	3%	28	78%	4	11%	3	8%
STG	Male	16	3	19%	12	75%	1	6%	0	0%
STG	Female	6	2	33%	3	50%	1	16%	0	0%
TGS	Male	17	0	0%	14	82%	3	18%	0	0%
TGS	Female	24	2	8%	20	83%	2	8%	0	0%
Total	Male	68	4	6%	52	76%	11	16%	1	1%
Total	Female	66	5	8%	51	77%	7	11%	3	5%
Total Students		134	9	7%	103	77%	18	13%	4	3%

Grade 6 Mathematics - NECAP

Percent of Students



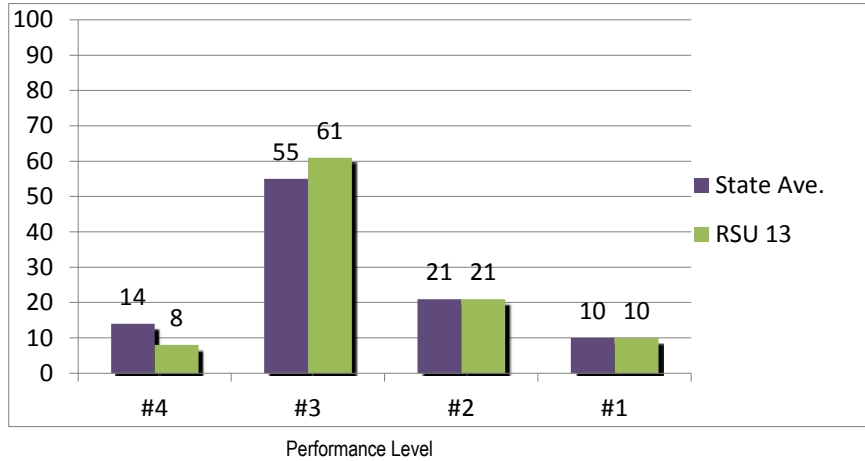
Percent of Students



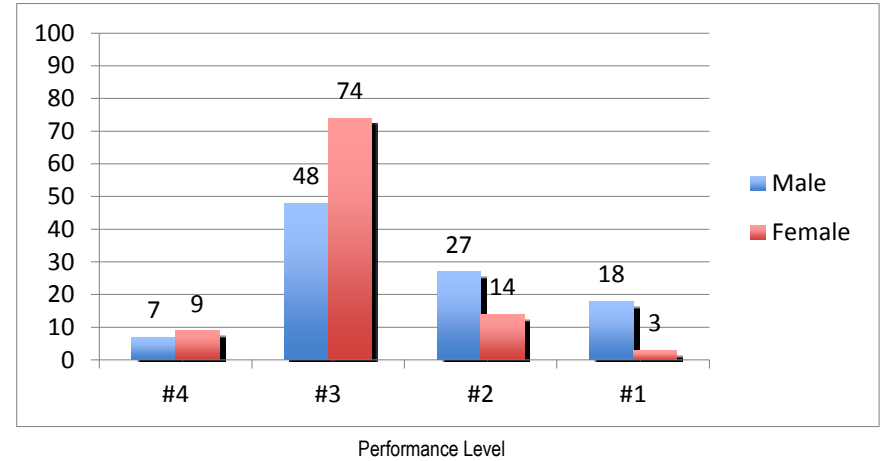
School	Gender	Total # of Students Tested Fall 2012	Number Proficient With Distinction (4)	Percent % Proficient With Distinction (4)	Number Proficient (3)	Percent % Proficient (3)	Number Partially Proficient (2)	Percent % Partially Proficient (2)	Number Below Proficient (1)	Percent % Below Proficient (1)
RDMS	Male	35	11	31%	15	43%	7	20%	2	6%
RDMS	Female	36	10	28%	13	36%	8	22%	5	14%
STG	Male	16	3	19%	8	50%	2	13%	3	19%
STG	Female	6	0	0	2	33%	3	50%	1	16%
TGS	Male	17	7	41%	8	47%	1	6%	1	6%
TGS	Female	24	2	8%	14	58%	5	21%	3	13%
Total	Male	68	21	31%	31	46%	10	15%	6	9%
Total	Female	66	12	18%	29	44%	16	24%	9	14%
Total Students		134	33	25%	60	45%	26	19%	15	11%

Grade 7 Reading - NECAP

Percent of Students



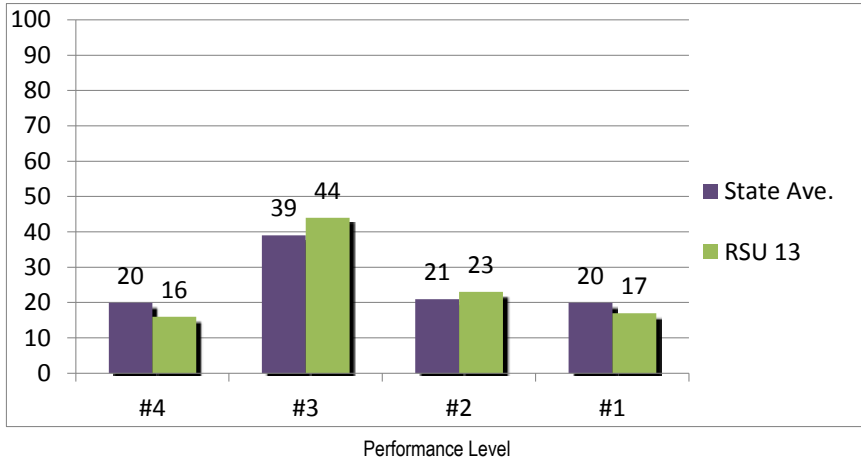
Percent of Students



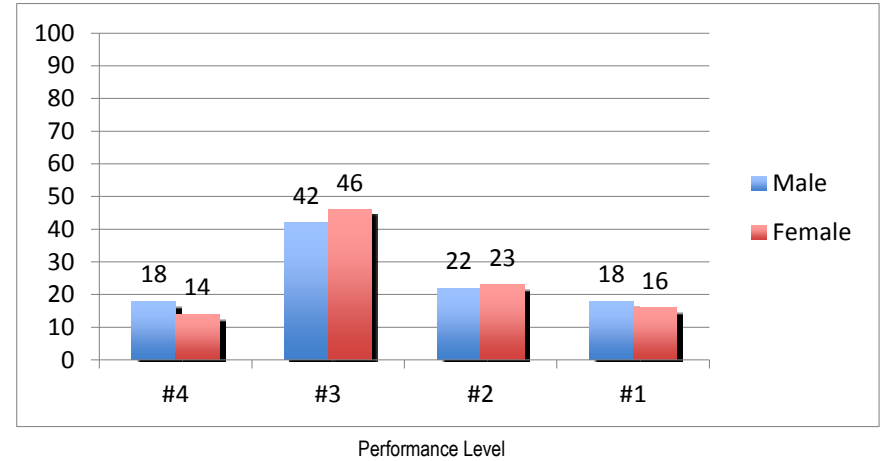
School	Gender	Total # of Students Tested Fall 2012	Number Proficient With Distinction (4)	Percent % Proficient With Distinction (4)	Number Proficient (3)	Percent % Proficient (3)	Number Partially Proficient (2)	Percent % Partially Proficient (2)	Number Below Proficient (1)	Percent % Below Proficient (1)
RDMS	Male	39	0	0%	18	46%	12	31%	9	23%
RDMS	Female	32	0	0%	23	72%	7	22%	2	6%
████████	████████	████████	████████	████████	████████	████████	████████	████████	████████	████████
STG	Male	16	5	31%	5	31%	4	25%	2	13%
STG	Female	17	4	24%	13	76%	0	0%	0	0%
████████	████████	████████	████████	████████	████████	████████	████████	████████	████████	████████
TGS	Male	12	0	0%	9	75%	2	17%	1	8%
TGS	Female	20	2	10%	15	75%	3	15%	0	0%
████████	████████	████████	████████	████████	████████	████████	████████	████████	████████	████████
Total	Male	67	5	7%	32	48%	18	27%	12	18%
Total	Female	69	6	9%	51	74%	10	14%	2	3%
Total Students		136	11	8%	83	61%	28	21%	14	10%

Grade 7 Mathematics - NECAP

Percent of Students



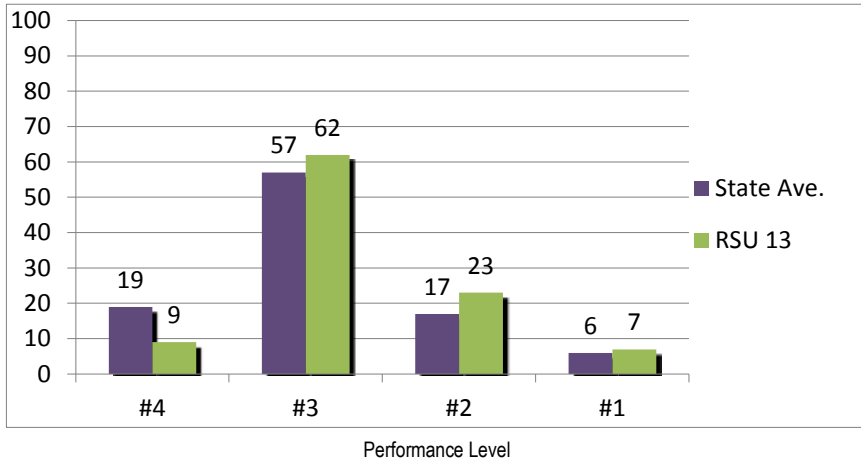
Percent of Students



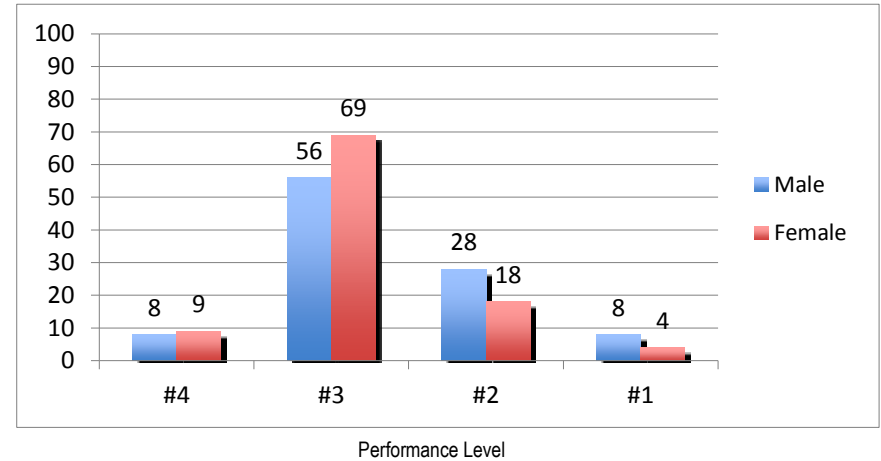
School	Gender	Total # of Students Tested Fall 2012	Number Proficient With Distinction (4)	Percent % Proficient With Distinction (4)	Number Proficient (3)	Percent % Proficient (3)	Number Partially Proficient (2)	Percent % Partially Proficient (2)	Number Below Proficient (1)	Percent % Below Proficient (1)
RDMS	Male	39	10	26%	17	44%	7	18%	5	13%
RDMS	Female	32	7	22%	13	41%	8	25%	4	13%
██████████	██████████	██████████	██████████	██████████	██████████	██████████	██████████	██████████	██████████	██████████
STG	Male	16	2	13%	6	38%	6	38%	2	13%
STG	Female	17	1	6%	9	53%	3	18%	4	24%
██████████	██████████	██████████	██████████	██████████	██████████	██████████	██████████	██████████	██████████	██████████
TGS	Male	12	0	0%	5	42%	2	17%	5	42%
TGS	Female	20	2	10%	10	50%	5	25%	3	15%
██████████	██████████	██████████	██████████	██████████	██████████	██████████	██████████	██████████	██████████	██████████
Total	Male	67	12	18%	28	42%	15	22%	12	18%
Total	Female	69	10	14%	32	46%	16	23%	11	16%
Total Students		136	22	16%	60	44%	31	23%	23	17%

Grade 8 Reading - NECAP

Percent of Students



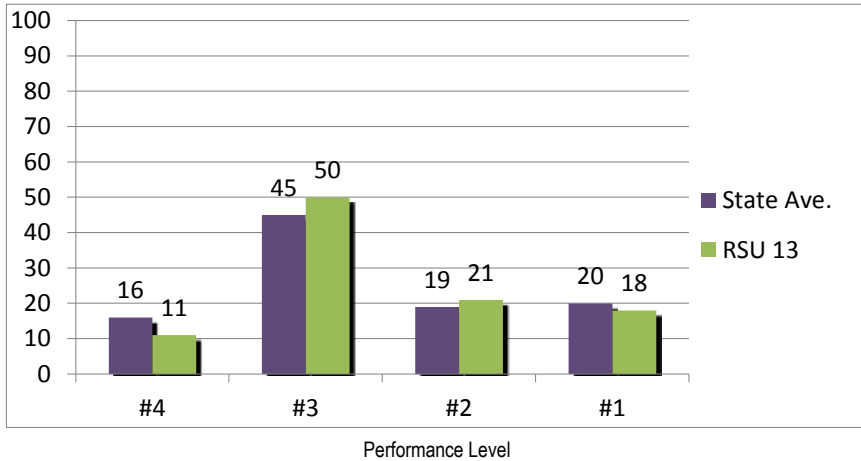
Percent of Students



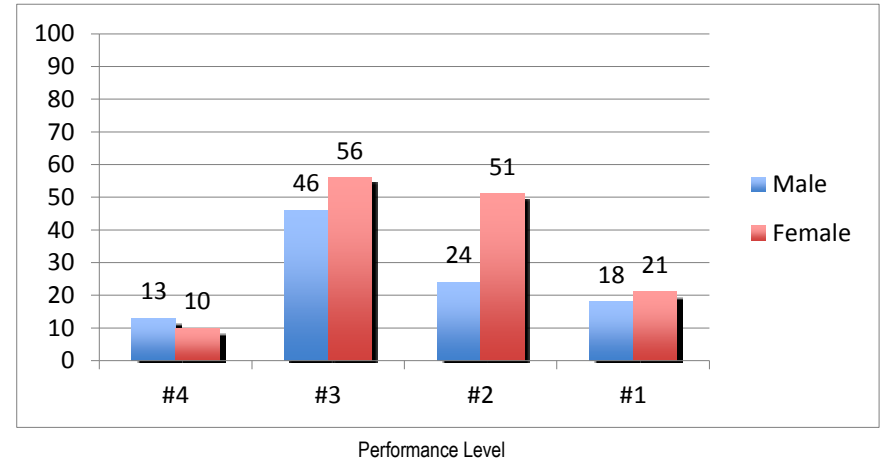
	Gender	Total # of Students Tested Fall 2012	Number Proficient With Distinction (4)	Percent % Proficient With Distinction (4)	Number Proficient (3)	Percent % Proficient (3)	Number Partially Proficient (2)	Percent % Partially Proficient (2)	Number Below Proficient (1)	Percent % Below Proficient (1)
OHS-W	Male	72	6	8%	40	56%	20	28%	6	8%
OHS-W	Female	68	6	9%	47	69%	12	18%	3	4%
Total Students		140	12	9%	87	62%	32	23%	9	6%

Grade 8 Mathematics - NECAP

Percent of Students



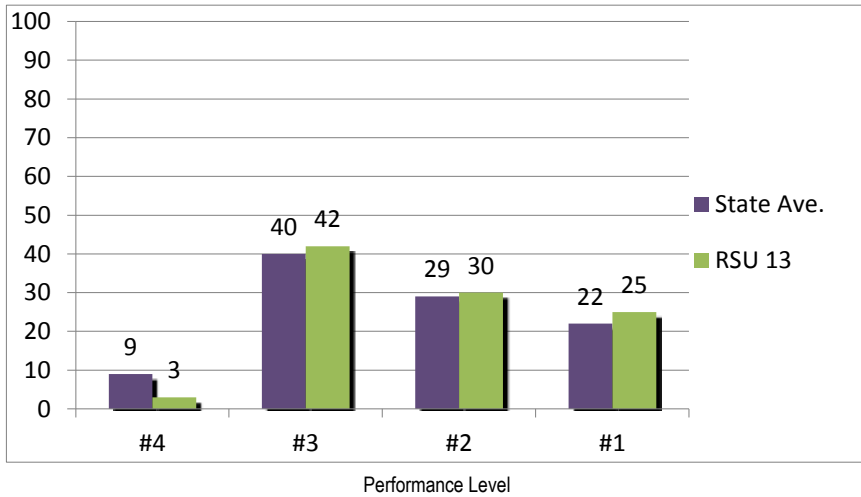
Percent of Students



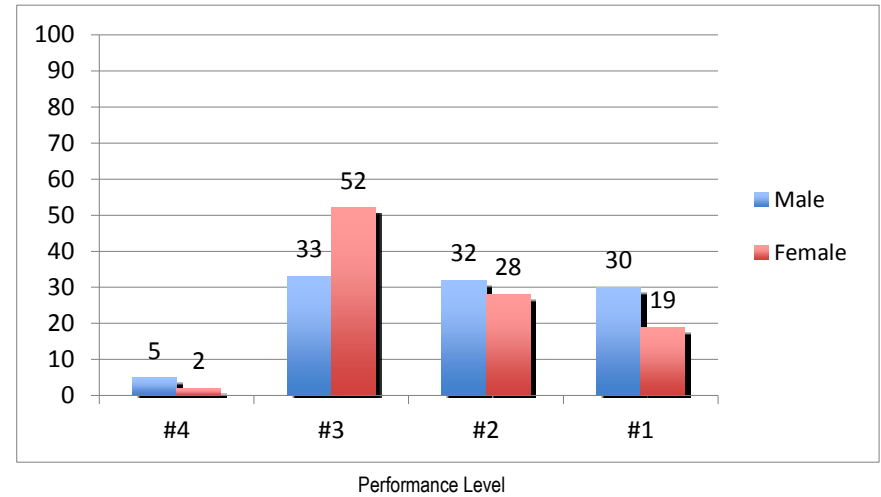
School	Gender	Total # of Students Tested Fall 2012	Number Proficient With Distinction (4)	Percent % Proficient With Distinction (4)	Number Proficient (3)	Percent % Proficient (3)	Number Partially Proficient (2)	Percent % Partially Proficient (2)	Number Below Proficient (1)	Percent % Below Proficient (1)
OHS-W	Male	72	9	13%	33	46%	17	24%	13	18%
OHS-W	Female	68	7	10%	38	56%	12	18%	11	16%
Total Students		140	16	11%	71	51%	29	21%	24	17%

Grade 11 Reading - MHSA

Percent of Students



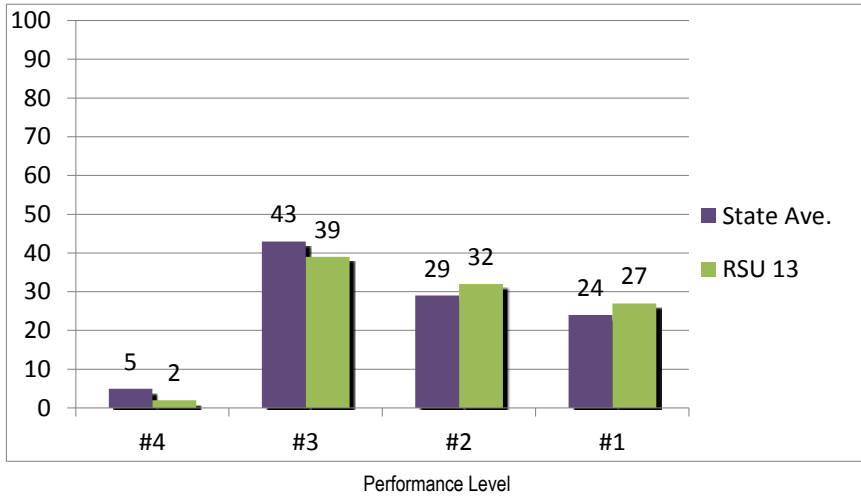
Percent of Students



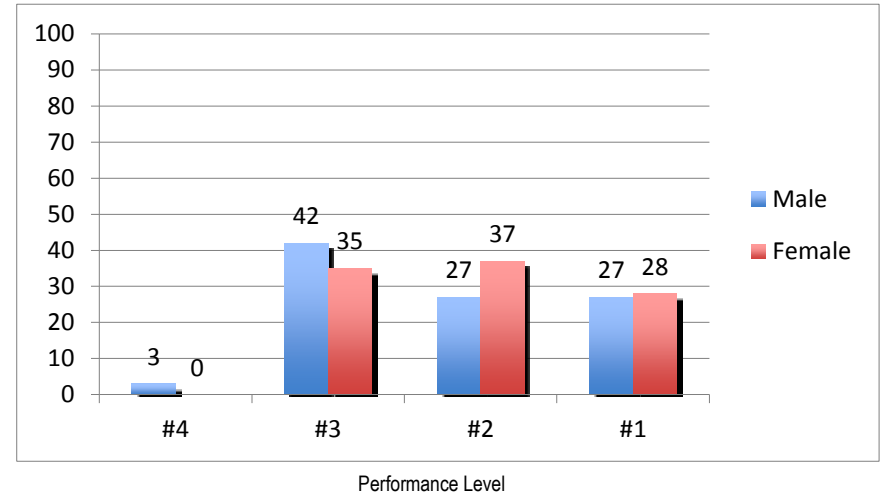
	Gender	Total # of Students Tested Fall 2012	Number Proficient With Distinction (4)	Percent % Proficient With Distinction (4)	Number Proficient (3)	Percent % Proficient (3)	Number Partially Proficient (2)	Percent % Partially Proficient (2)	Number Below Proficient (1)	Percent % Below Proficient (1)
OHS-E	Male	66	3	5%	22	33%	21	32%	20	30%
OHS-E	Female	54	1	2%	28	52%	15	28%	10	19%
Total Students		120	4	3%	50	42%	36	30%	30	25%

Grade 11 Mathematics - MHSA

Percent of Students



Percent of Students



School	Gender	Total # of Students Tested Fall 2012	Number Proficient With Distinction (4)	Percent % Proficient With Distinction (4)	Number Proficient (3)	Percent % Proficient (3)	Number Partially Proficient (2)	Percent % Partially Proficient (2)	Number Below Proficient (1)	Percent % Below Proficient (1)
OHS-E	Male	66	2	3%	28	42%	18	27%	18	27%
OHS-E	Female	54	0	0%	19	35%	20	37%	15	28%
Total Students		120	2	2%	47	39%	38	32%	33	27%